

The current regional supplier market

MAGISTRATES' COURT FEES AND THE REGIONAL SUPPLIER BASE

This document accompanies chapter two of the final report of Lord Carter's Review of Legal Aid Procurement. It provides information on average magistrates' court costs and on solicitors supplying legal aid services in each of the twelve Legal Services Commission regions. The structure of this document is as follows:

Legal Services Commission Region names.....	2
Average Magistrates' Court costs	3
Category 1 cases	3
Category 2 cases	8
Supplier base – Crime	13
Supplier base – Civil	25
Supplier base – Family	37
Supplier base – Mix of work undertaken by firms.....	49

LEGAL SERVICES COMMISSION REGION NAMES

LSC office	Region
Cambridge	East
Nottingham	East Midlands
London	London
Liverpool	Merseyside
Newcastle	North East
Manchester	North West
Brighton	South Eastern
Bristol	South West
Reading	Southern
Cardiff	Wales
Birmingham	West Midlands
Leeds	Yorkshire and Humberside

Table 1: LSC regional offices

AVERAGE MAGISTRATES' COURT COSTS

Category 1 cases

Average profit costs

	LSF	HSF	NSF
East	£ 203.80	£ 490.21	£ 985.57
East Midlands	£ 203.80	£ 490.21	£ 1,007.53
London	£ 262.32	£ 621.88	£ 1,347.05
Merseyside	£ 203.80	£ 490.21	£ 916.42
North East	£ 203.80	£ 490.21	£ 880.51
North West	£ 203.80	£ 490.21	£ 1,009.92
South Eastern	£ 203.80	£ 490.21	£ 1,078.71
South West	£ 203.80	£ 490.21	£ 976.55
Southern	£ 203.80	£ 490.22	£ 946.82
Wales	£ 203.80	£ 490.22	£ 1,006.95
West Midlands	£ 203.80	£ 490.21	£ 1,081.90
Yorkshire and Humberside	£ 203.80	£ 490.22	£ 1,015.88

Table 2: Mean profit costs of Category 1 cases in 2004-05

Average travel costs

	LSF	HSF	NSF
East	£ 17.75	£ 51.16	£ 99.71
East Midlands	£ 17.17	£ 50.67	£ 96.19
London	£ 52.65	£ 158.34	£ 270.49
Merseyside	£ 14.12	£ 46.55	£ 100.58
North East	£ 17.83	£ 63.94	£ 94.75
North West	£ 16.21	£ 53.47	£ 111.51
South Eastern	£ 20.27	£ 62.77	£ 130.00
South West	£ 19.43	£ 59.25	£ 110.22
Southern	£ 19.35	£ 54.16	£ 91.87
Wales	£ 22.26	£ 65.33	£ 122.02
West Midlands	£ 17.77	£ 51.91	£ 94.78
Yorkshire and Humberside	£ 13.62	£ 44.31	£ 86.63

Table 3: Mean travel costs of Category 1 cases in 2004-05

Average waiting costs

	LSF	HSF	NSF
East	£ 25.90	£ 63.30	£ 109.83
East Midlands	£ 27.16	£ 68.57	£ 111.04
London	£ 57.06	£ 140.23	£ 202.07
Merseyside	£ 23.83	£ 64.43	£ 120.22
North East	£ 23.50	£ 71.53	£ 108.88
North West	£ 27.90	£ 73.16	£ 110.59
South Eastern	£ 28.43	£ 71.14	£ 110.92
South West	£ 24.41	£ 62.84	£ 92.94
Southern	£ 27.97	£ 68.92	£ 98.86
Wales	£ 29.62	£ 72.81	£ 120.82
West Midlands	£ 29.77	£ 73.02	£ 119.29
Yorkshire and Humberside	£ 20.71	£ 54.34	£ 93.20

Table 4: Mean waiting costs of Category 1 cases in 2004-05

Average total costs

	LSF	HSF	NSF
East	£ 247.45	£ 604.66	£ 1,195.10
East Midlands	£ 248.13	£ 609.45	£ 1,214.76
London	£ 372.03	£ 920.45	£ 1,819.61
Merseyside	£ 241.75	£ 601.19	£ 1,137.22
North East	£ 245.12	£ 625.68	£ 1,084.14
North West	£ 247.91	£ 616.84	£ 1,232.02
South Eastern	£ 252.50	£ 624.12	£ 1,319.63
South West	£ 247.64	£ 612.29	£ 1,179.72
Southern	£ 251.12	£ 613.30	£ 1,137.56
Wales	£ 255.68	£ 628.36	£ 1,249.80
West Midlands	£ 251.34	£ 615.13	£ 1,295.96
Yorkshire and Humberside	£ 238.13	£ 588.86	£ 1,195.71

Table 5: Mean total costs of Category 1 cases in 2004-05

Travel and waiting as a proportion of total costs

	LSF	HSF	NSF
East	18%	19%	18%
East Midlands	18%	20%	17%
London	29%	32%	26%
Merseyside	16%	18%	19%
North East	17%	22%	19%
North West	18%	21%	18%
South Eastern	19%	21%	18%
South West	18%	20%	17%
Southern	19%	20%	17%
Wales	20%	22%	19%
West Midlands	19%	20%	17%
Yorkshire and Humberside	14%	17%	15%

Table 6: Travel and waiting as a proportion of total costs in Category 1 cases in 2004-05

Category 2 cases***Average profit costs***

	LSF	HSF	NSF
East	£ 359.83	£ 825.33	£ 1,476.88
East Midlands	£ 359.83	£ 825.33	£ 1,641.05
London	£ 461.72	£ 1,037.12	£ 1,842.99
Merseyside	£ 359.84	£ 825.32	£ 1,433.01
North East	£ 359.83	£ 825.32	£ 1,433.89
North West	£ 359.84	£ 825.32	£ 1,471.28
South Eastern	£ 359.82	£ 825.32	£ 1,655.81
South West	£ 359.82	£ 825.31	£ 1,436.17
Southern	£ 359.83	£ 825.34	£ 1,474.97
Wales	£ 359.83	£ 825.33	£ 1,473.79
West Midlands	£ 359.83	£ 825.32	£ 1,556.48
Yorkshire and Humberside	£ 359.84	£ 825.32	£ 1,489.75

Table 7: Mean profit costs of Category 2 cases in 2004-05

Average travel costs

	LSF	HSF	NSF
East	£ 37.04	£ 73.51	£ 118.77
East Midlands	£ 34.67	£ 70.71	£ 132.63
London	£ 105.24	£ 195.58	£ 306.98
Merseyside	£ 26.95	£ 58.84	£ 106.94
North East	£ 38.94	£ 80.16	£ 121.25
North West	£ 34.25	£ 76.66	£ 131.92
South Eastern	£ 41.07	£ 81.39	£ 143.75
South West	£ 42.95	£ 84.45	£ 142.11
Southern	£ 40.63	£ 78.91	£ 117.54
Wales	£ 44.32	£ 87.31	£ 133.36
West Midlands	£ 36.01	£ 75.95	£ 119.76
Yorkshire and Humberside	£ 28.77	£ 57.44	£ 105.85

Table 8: Mean travel costs of Category 2 cases in 2004-05

Average waiting costs

	LSF	HSF	NSF
East	£ 43.71	£ 74.75	£ 111.38
East Midlands	£ 44.63	£ 78.68	£ 125.94
London	£ 90.60	£ 155.67	£ 221.44
Merseyside	£ 41.82	£ 73.82	£ 109.94
North East	£ 43.70	£ 79.39	£ 105.20
North West	£ 50.48	£ 89.79	£ 123.12
South Eastern	£ 48.03	£ 83.57	£ 131.77
South West	£ 44.05	£ 74.26	£ 107.77
Southern	£ 47.80	£ 87.58	£ 124.98
Wales	£ 55.66	£ 87.64	£ 114.41
West Midlands	£ 49.87	£ 89.94	£ 123.15
Yorkshire and Humberside	£ 37.58	£ 64.78	£ 95.88

Table 9: Mean waiting costs of Category 2 cases in 2004-05

Average total costs

	LSF	HSF	NSF
East	£ 440.58	£ 973.59	£ 1,707.03
East Midlands	£ 439.12	£ 974.71	£ 1,899.62
London	£ 657.56	£ 1,388.37	£ 2,371.41
Merseyside	£ 428.61	£ 957.98	£ 1,649.89
North East	£ 442.47	£ 984.87	£ 1,660.35
North West	£ 444.57	£ 991.77	£ 1,726.33
South Eastern	£ 448.92	£ 990.27	£ 1,931.34
South West	£ 446.82	£ 984.03	£ 1,686.05
Southern	£ 448.26	£ 991.84	£ 1,717.49
Wales	£ 459.81	£ 1,000.29	£ 1,721.55
West Midlands	£ 445.71	£ 991.21	£ 1,799.39
Yorkshire and Humberside	£ 426.19	£ 947.54	£ 1,691.49

Table 10: Mean total costs of Category 2 cases in 2004-05

Travel and waiting as a proportion of total costs

	LSF	HSF	NSF
East	18%	15%	13%
East Midlands	18%	15%	14%
London	30%	25%	22%
Merseyside	16%	14%	13%
North East	19%	16%	14%
North West	19%	17%	15%
South Eastern	20%	17%	14%
South West	19%	16%	15%
Southern	20%	17%	14%
Wales	22%	17%	14%
West Midlands	19%	17%	13%
Yorkshire and Humberside	16%	13%	12%

Table 11: Travel and waiting as a proportion of total costs in Category 2 cases in 2004-05

SUPPLIER BASE – CRIME

Eastern

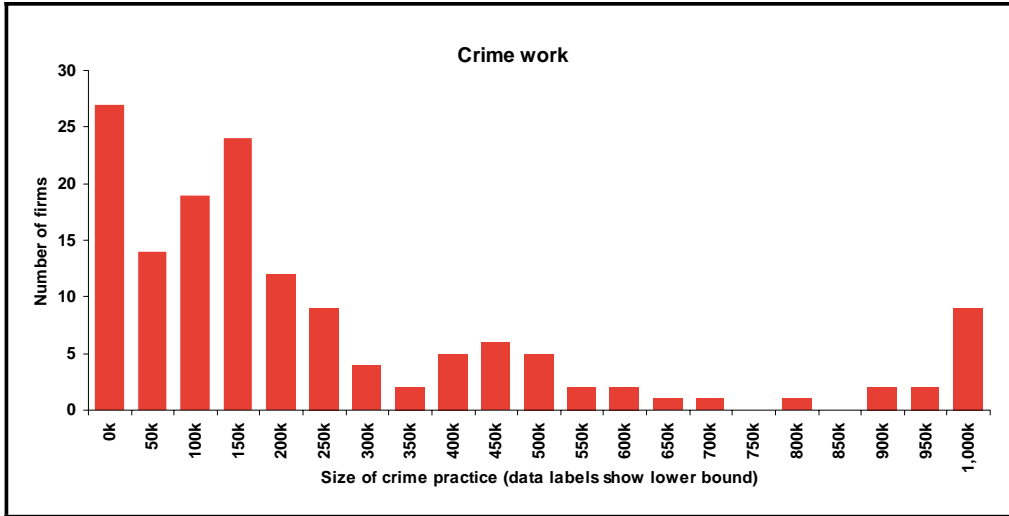


Figure 1: Number of firms with crime practices - Eastern

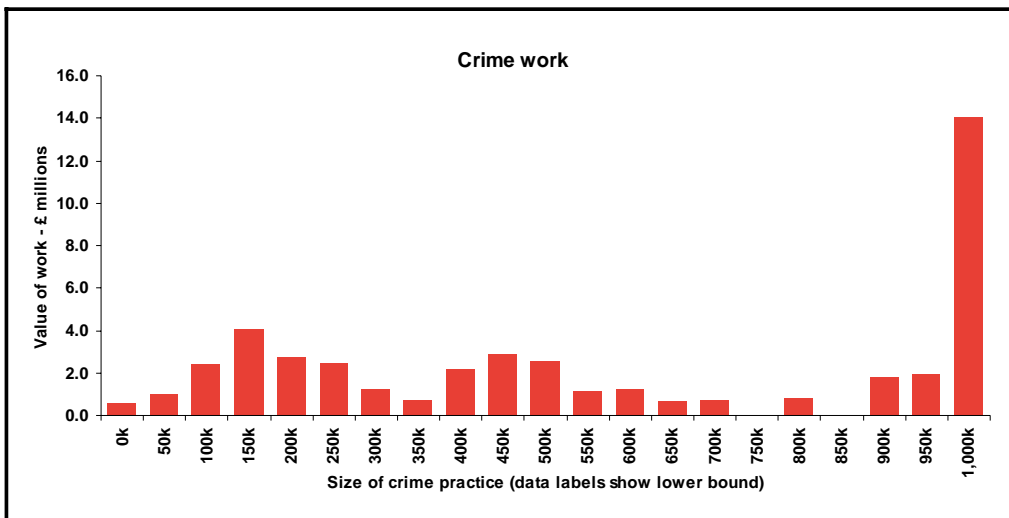


Figure 2: Value of work done by crime practice - Eastern

East Midlands

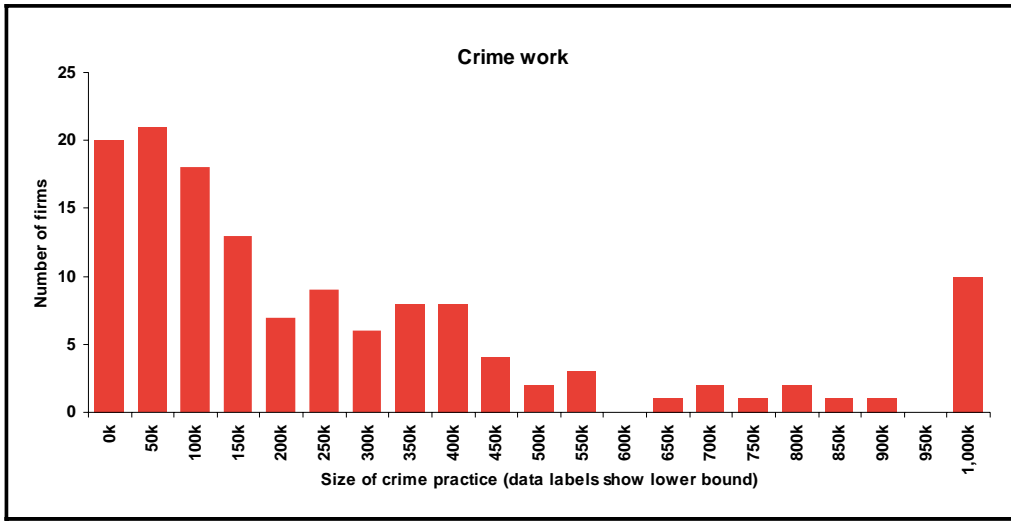


Figure 3: Number of firms with crime practices – East Midlands

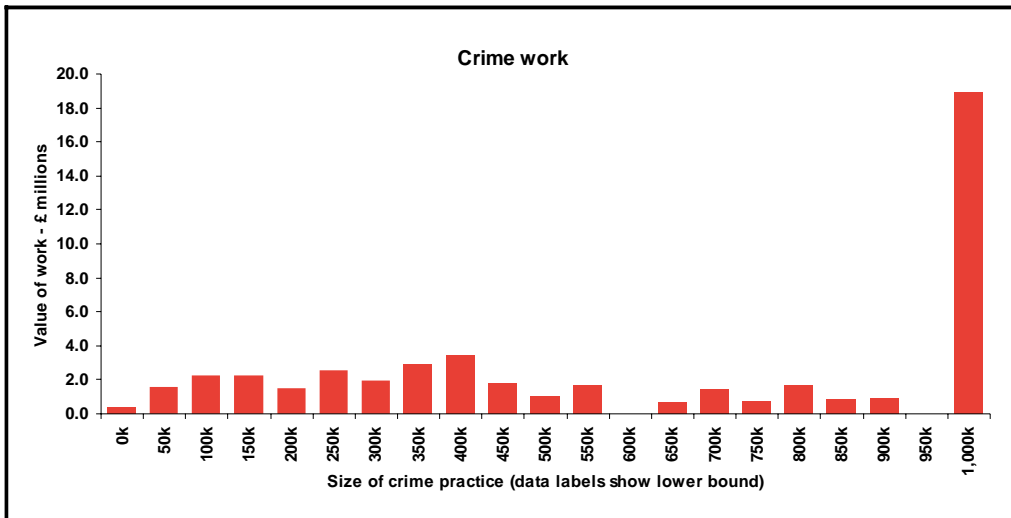


Figure 4: Value of work done by crime practice – East Midlands

London

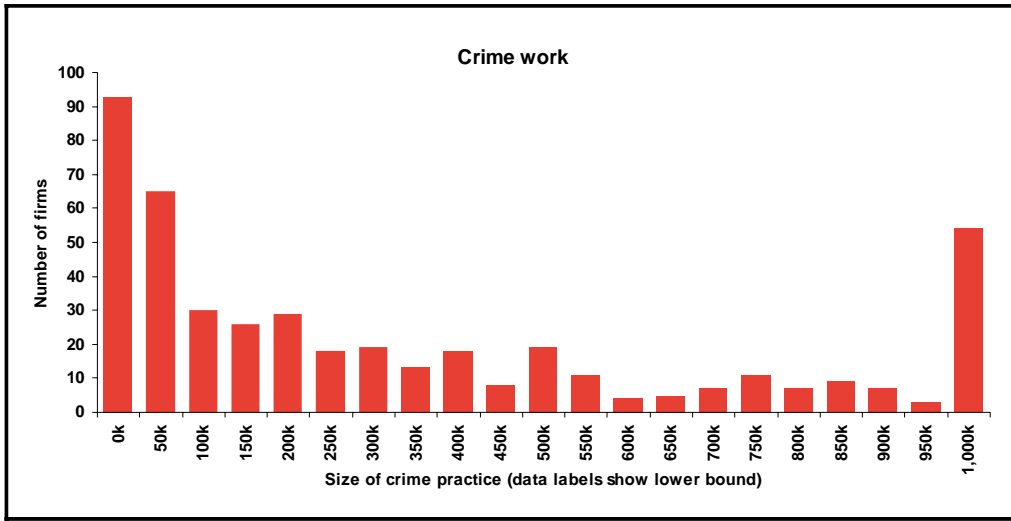


Figure 5: Number of firms with crime practices - London

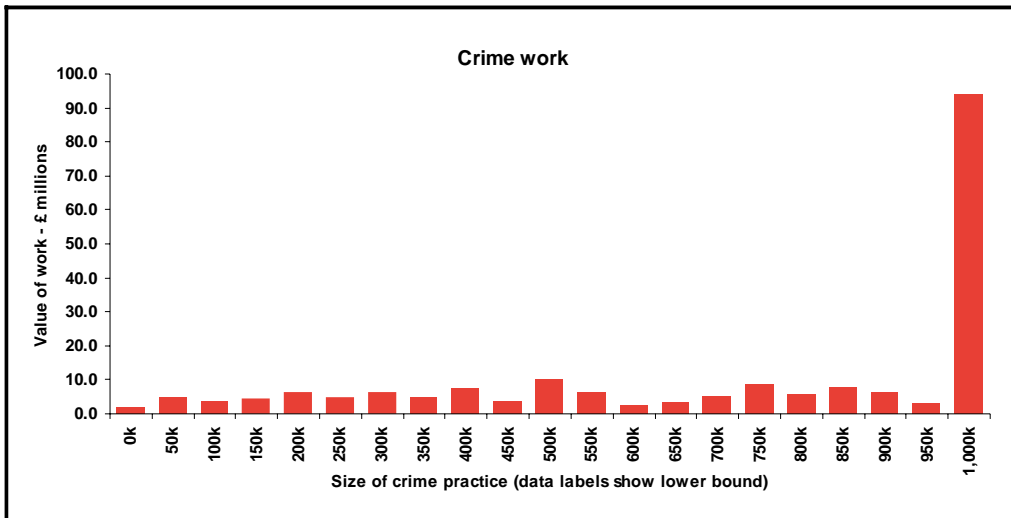


Figure 6: Value of work done by crime practice - London

Merseyside

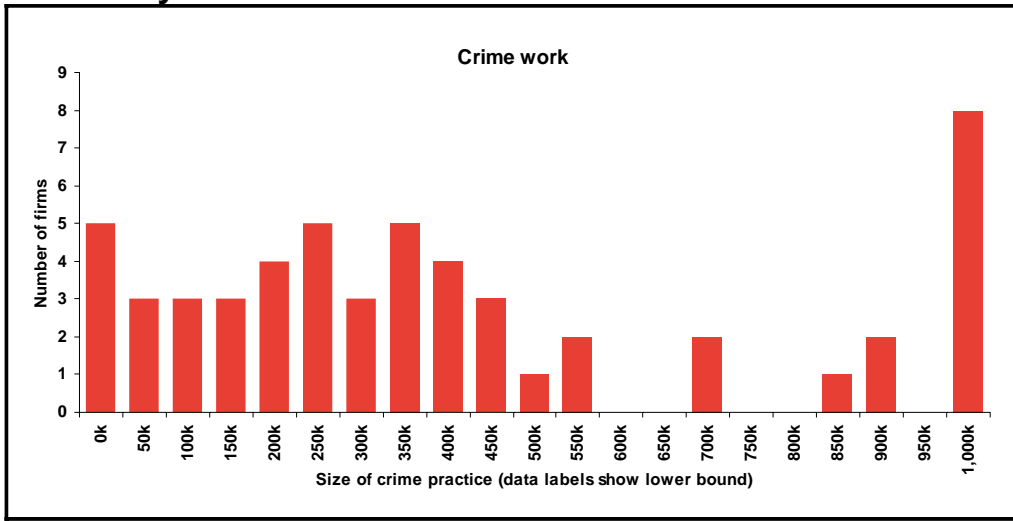


Figure 7: Number of firms with crime practices - Merseyside

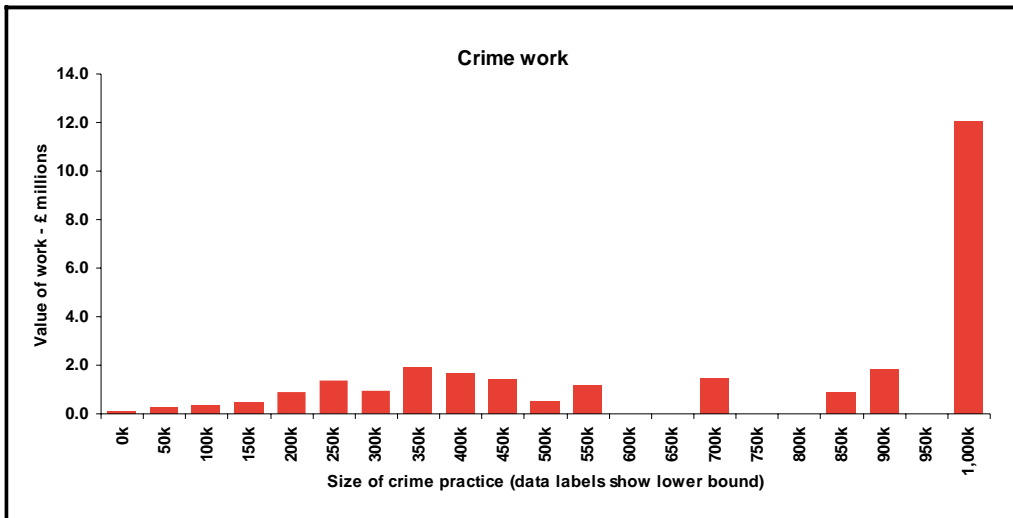


Figure 8: Value of work done by crime practice - Merseyside

North East

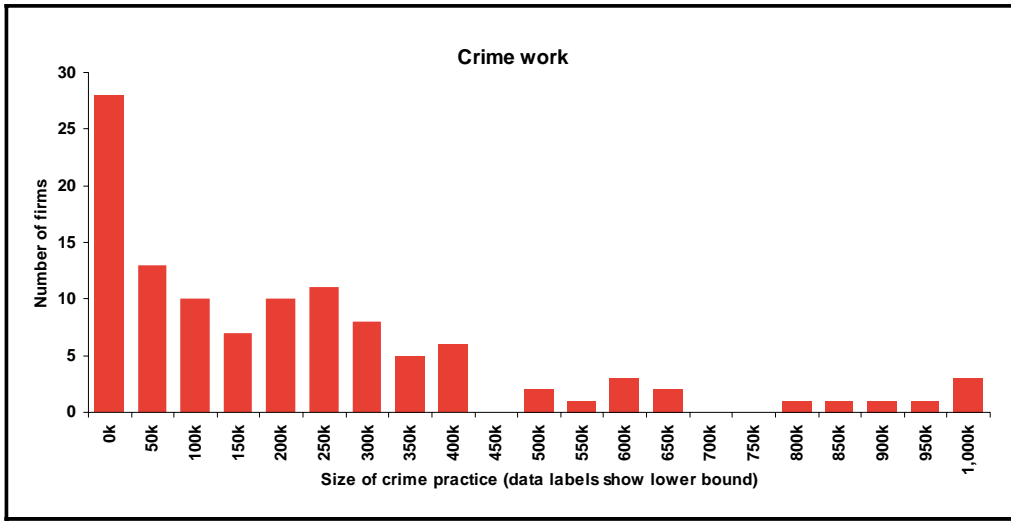


Figure 9: Number of firms with crime practices – North East

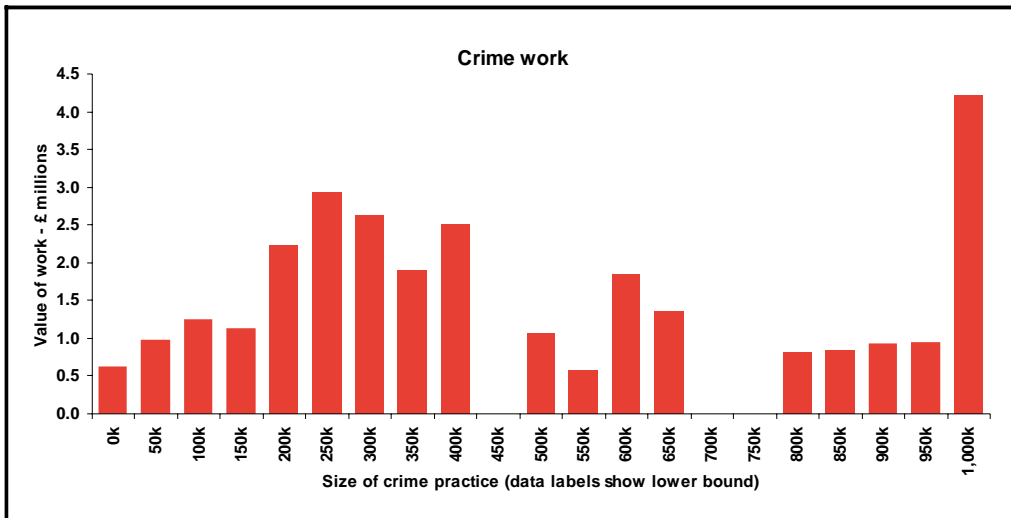


Figure 10: Value of work done by crime practice – North East

North West

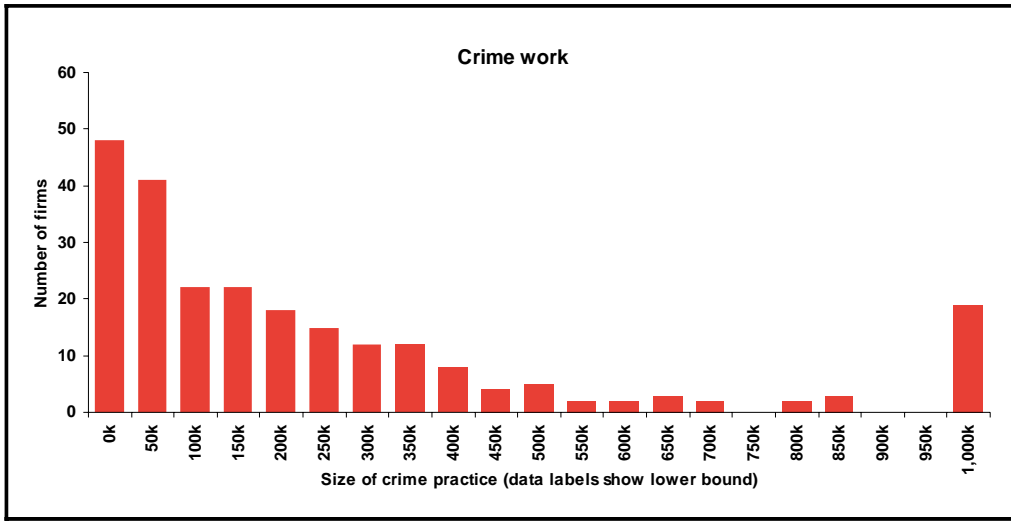


Figure 11: Number of firms with crime practices – North West

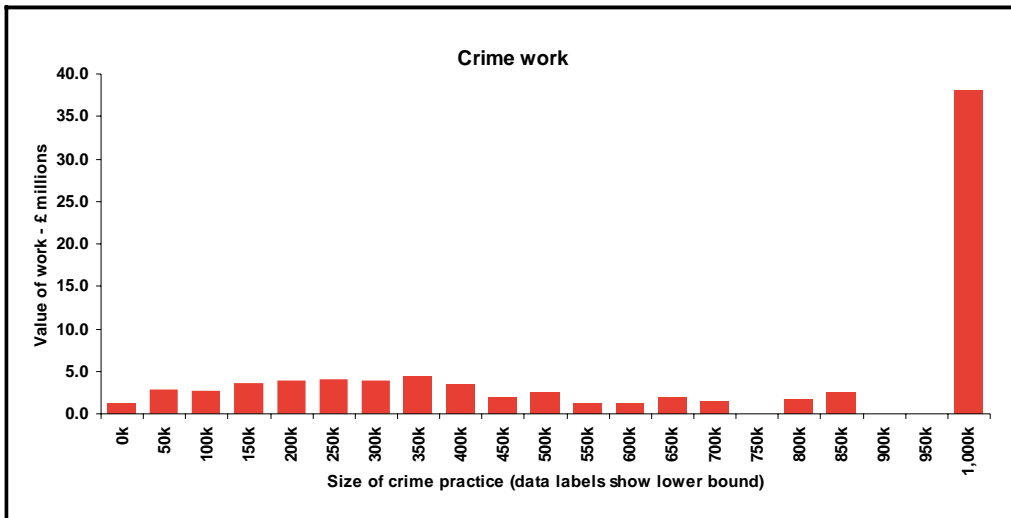


Figure 12: Value of work done by crime practice – North West

South Eastern

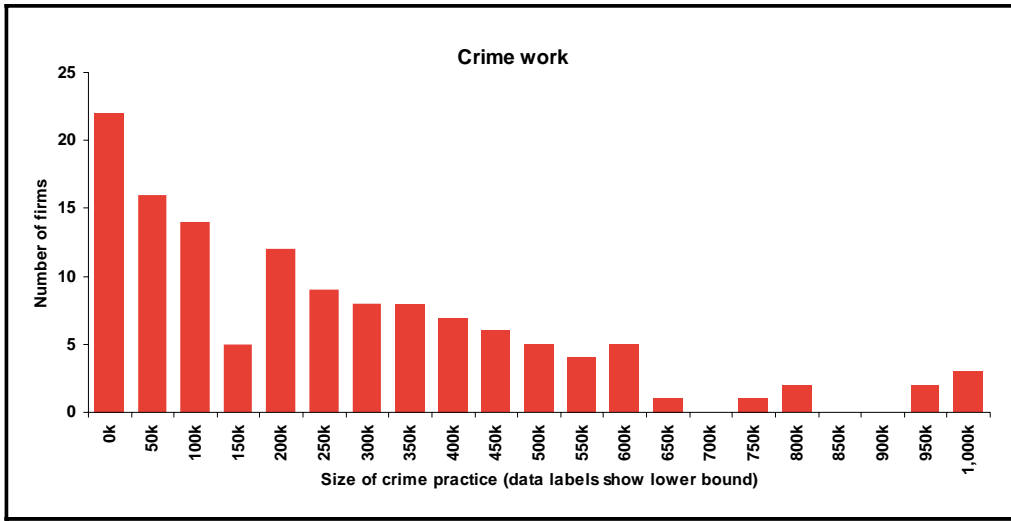


Figure 13: Number of firms with crime practices – South Eastern

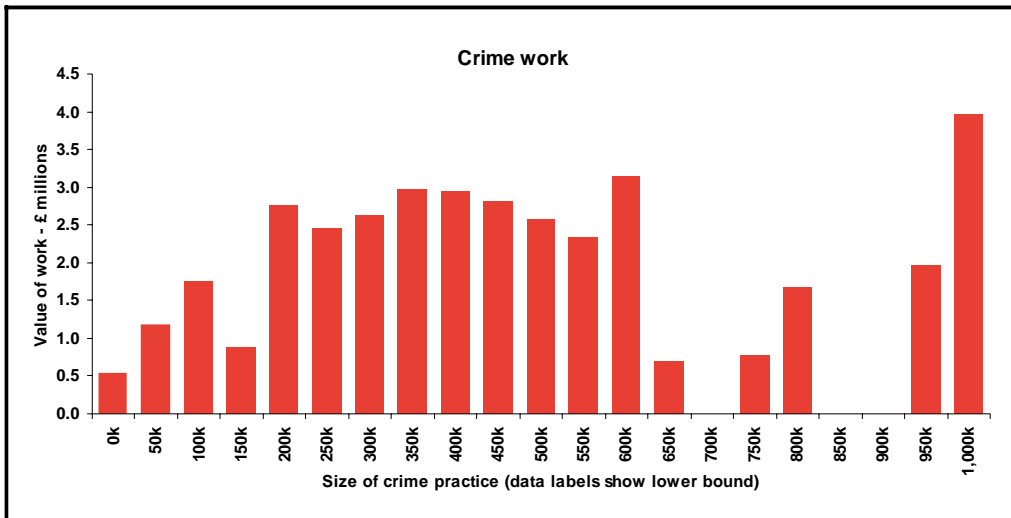


Figure 14: Value of work done by crime practice – South Eastern

South West

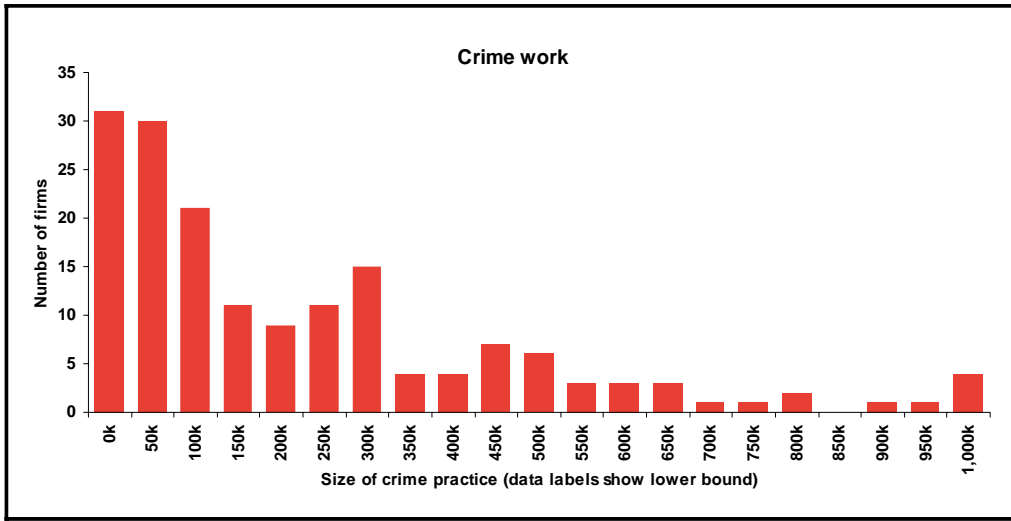


Figure 15: Number of firms with crime practices – South West

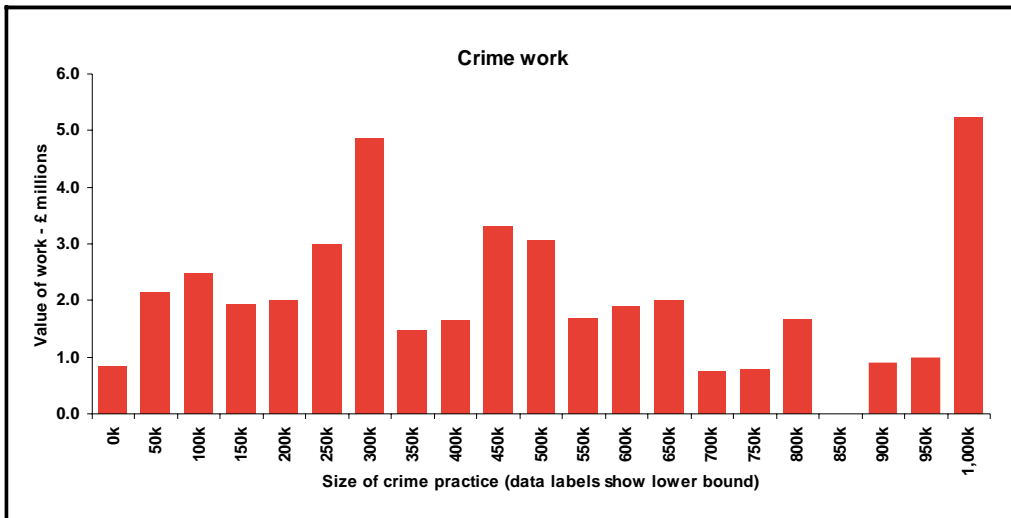


Figure 16: Value of work done by crime practice – South West

Southern

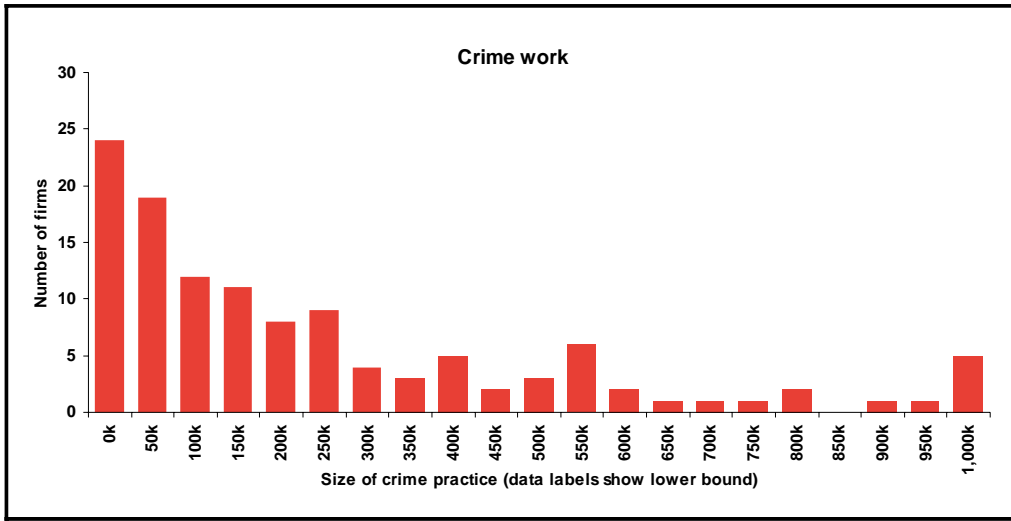


Figure 17: Number of firms with crime practices – Southern

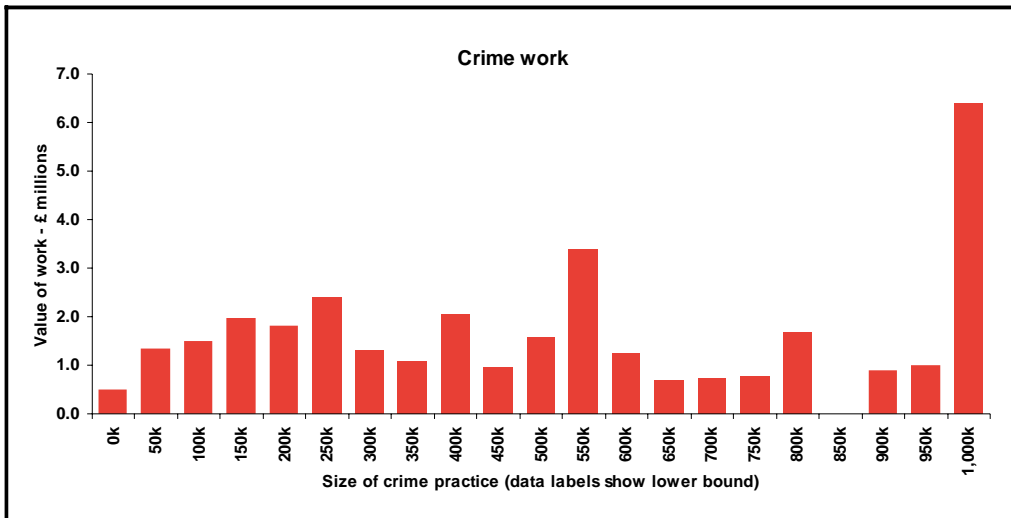


Figure 18: Value of work done by crime practice - Southern

Wales

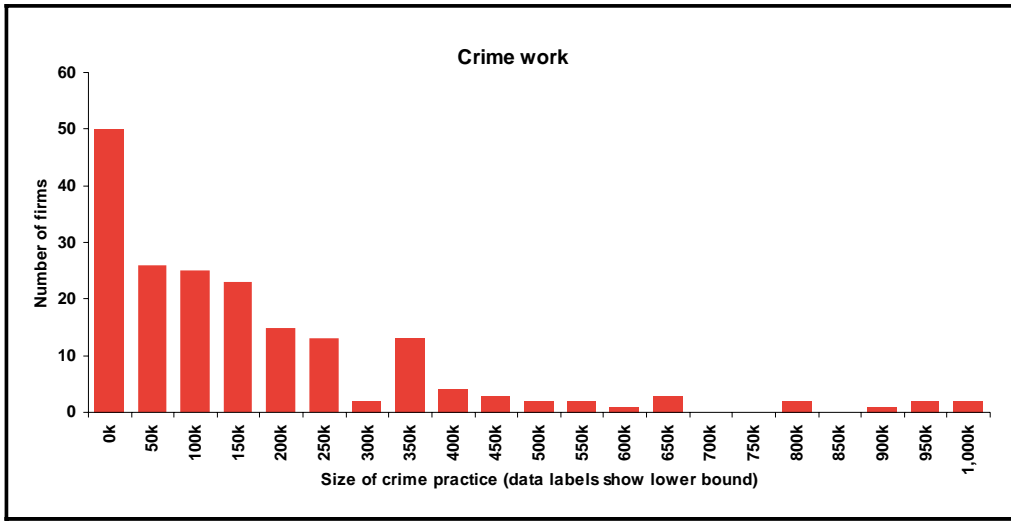


Figure 19: Number of firms with crime practices - Wales

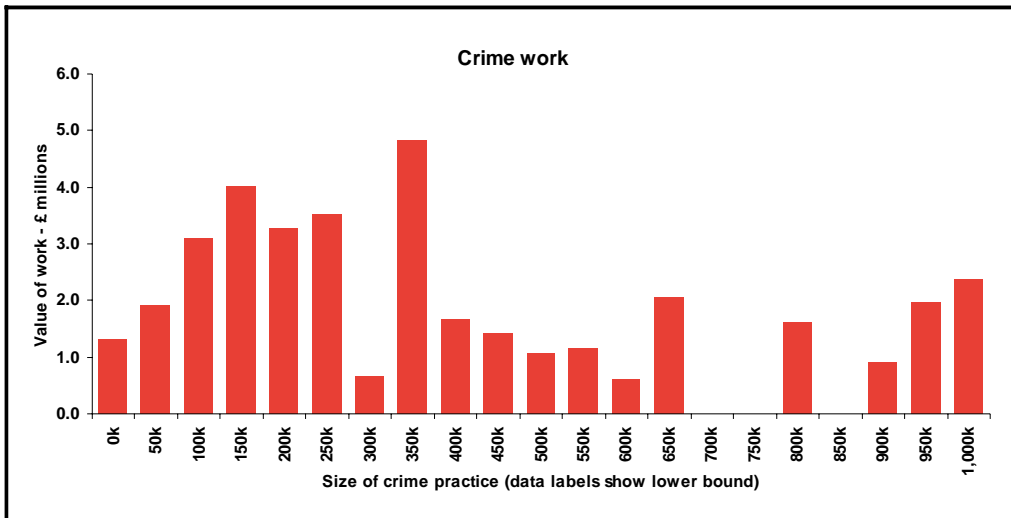


Figure 20: Value of work done by crime practice – Wales

West Midlands

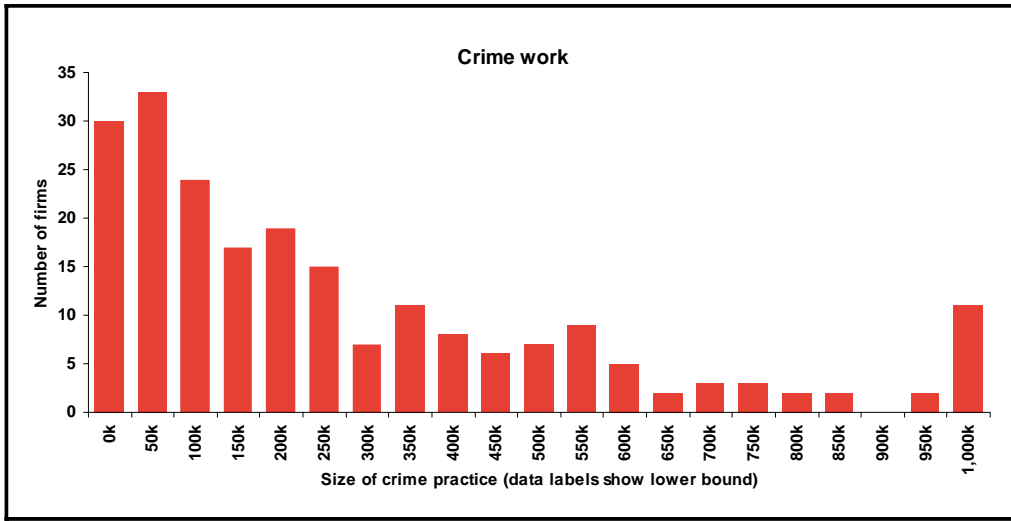


Figure 21: Number of firms with crime practices – West Midlands

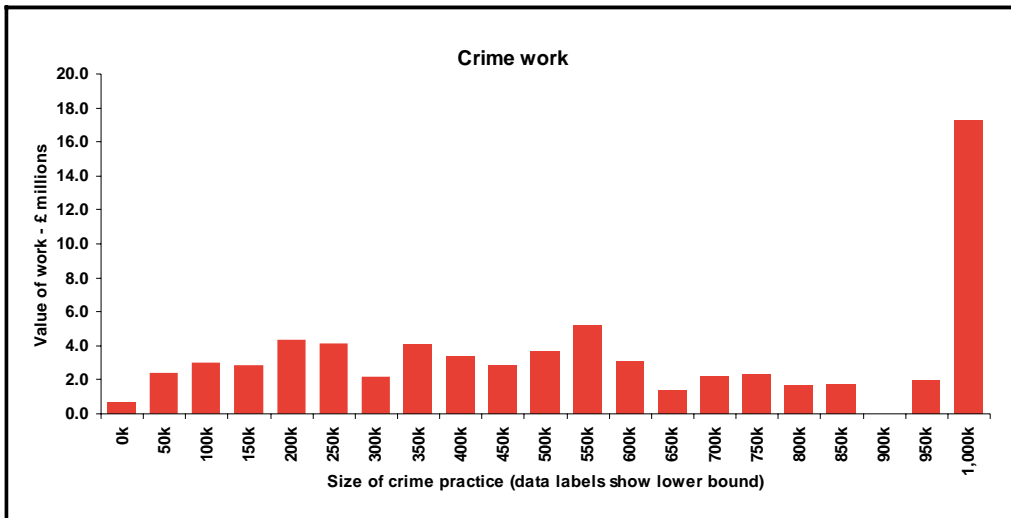


Figure 22: Value of work done by crime practice – West Midlands

Yorkshire & Humberside

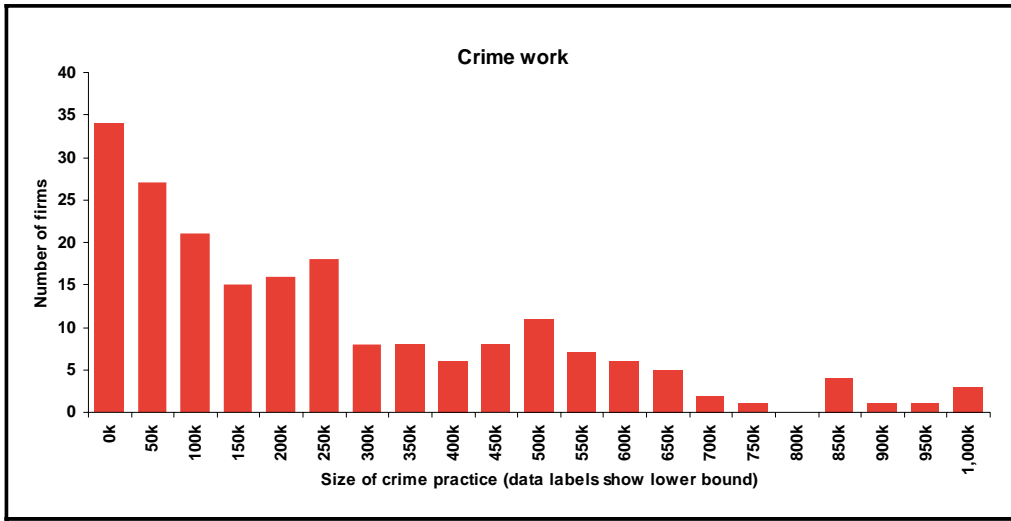


Figure 23: Number of firms with crime practices – Yorkshire & Humberside

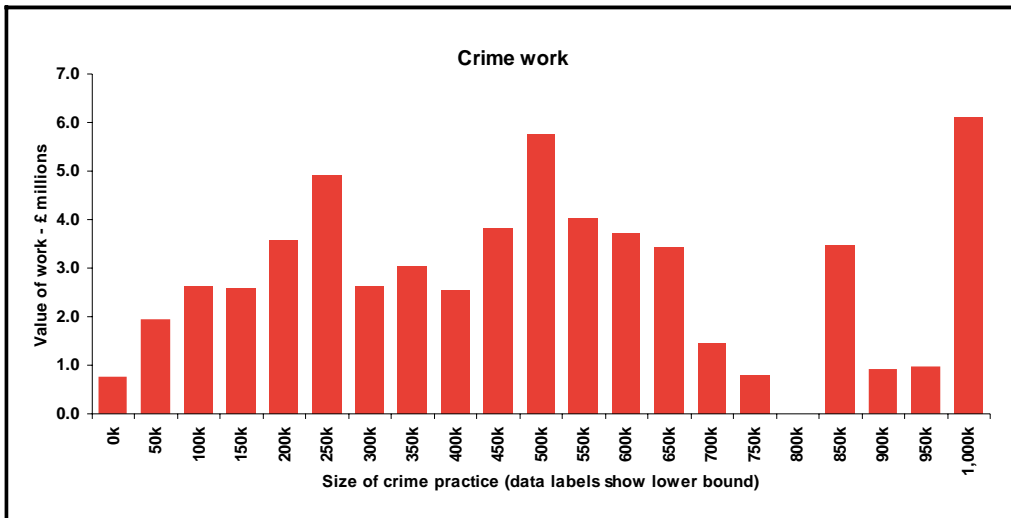


Figure 24: Value of work done by crime practice – Yorkshire & Humberside

SUPPLIER BASE – CIVIL

Eastern

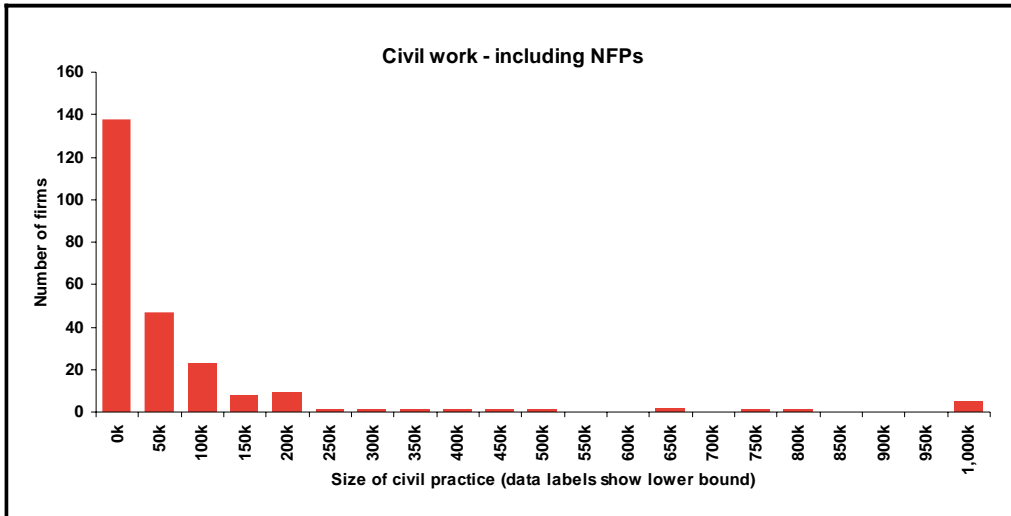


Figure 25: Number of firms with civil practices - Eastern

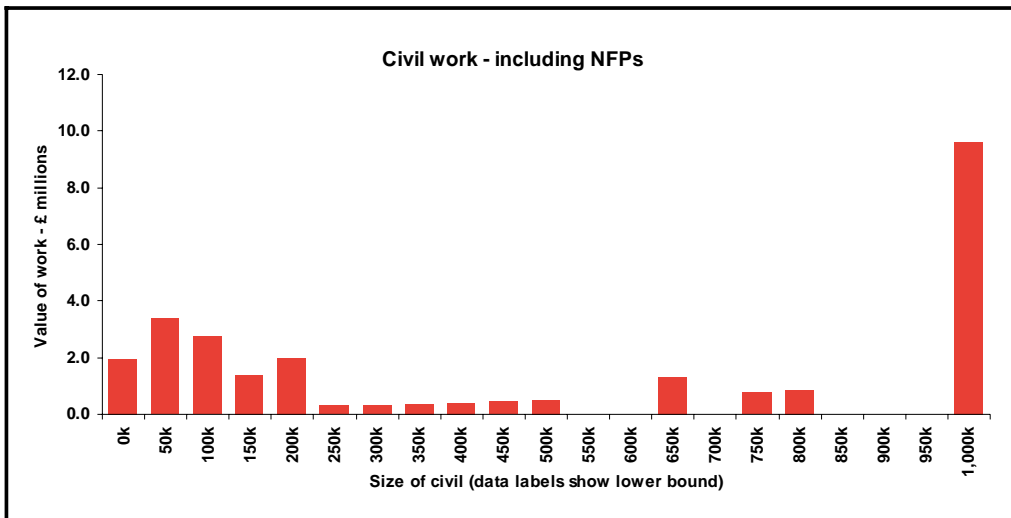


Figure 26: Value of work done by civil practice - Eastern

East Midlands

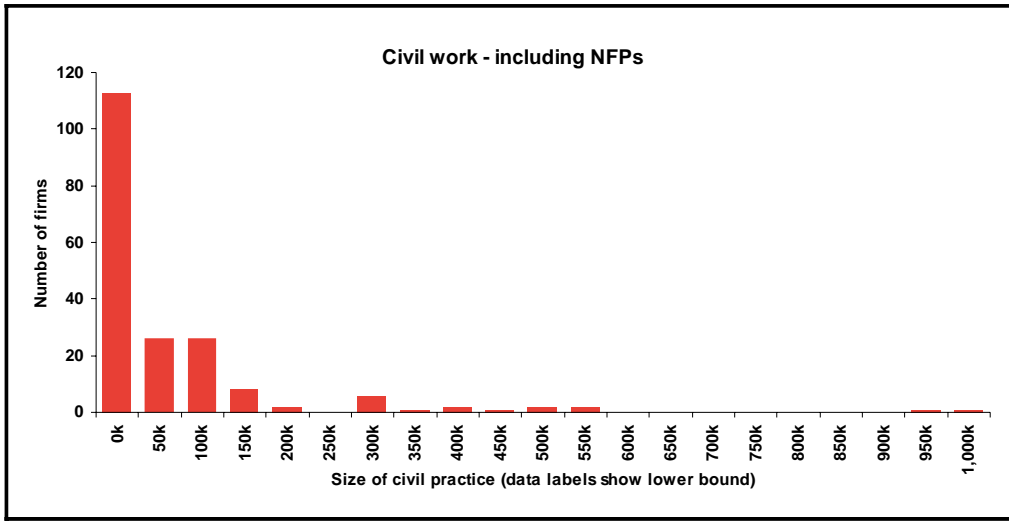


Figure 27: Number of firms with civil practices – East Midlands

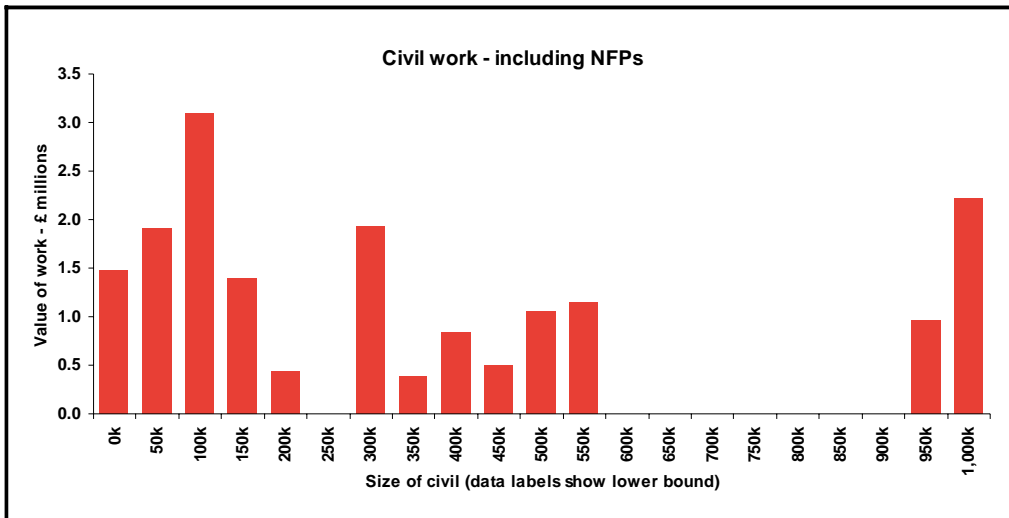


Figure 28: Value of work done by civil practice – East Midlands

London

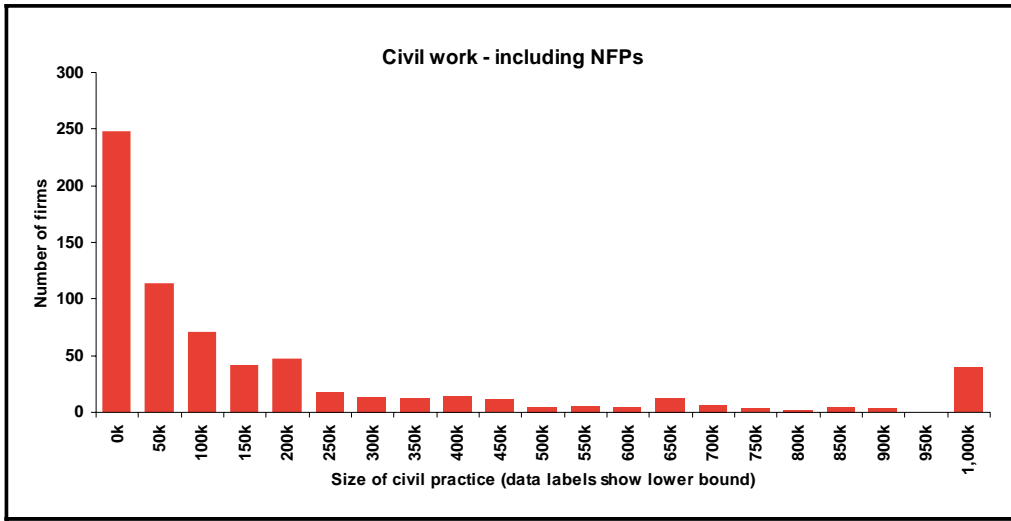


Figure 29: Number of firms with civil practices - London

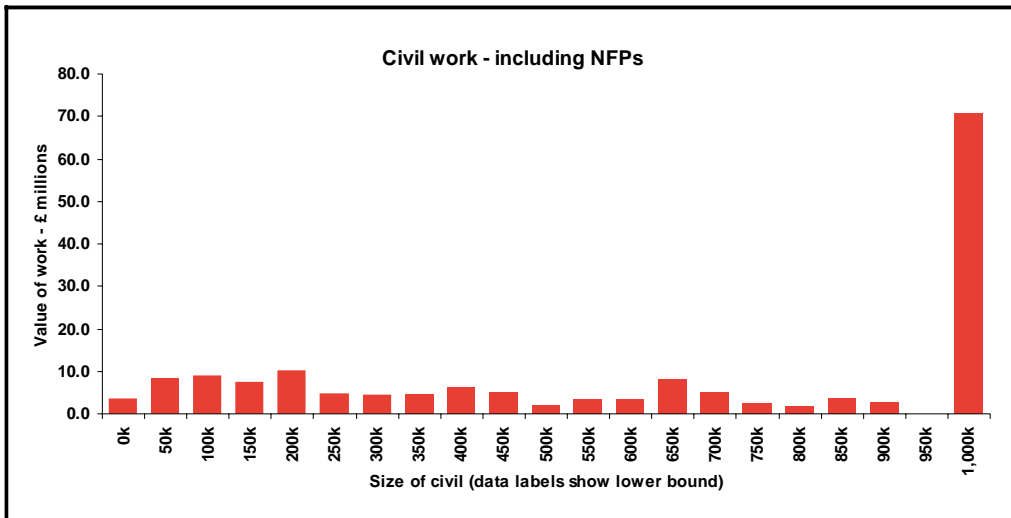


Figure 30: Value of work done by civil practice - London

Merseyside

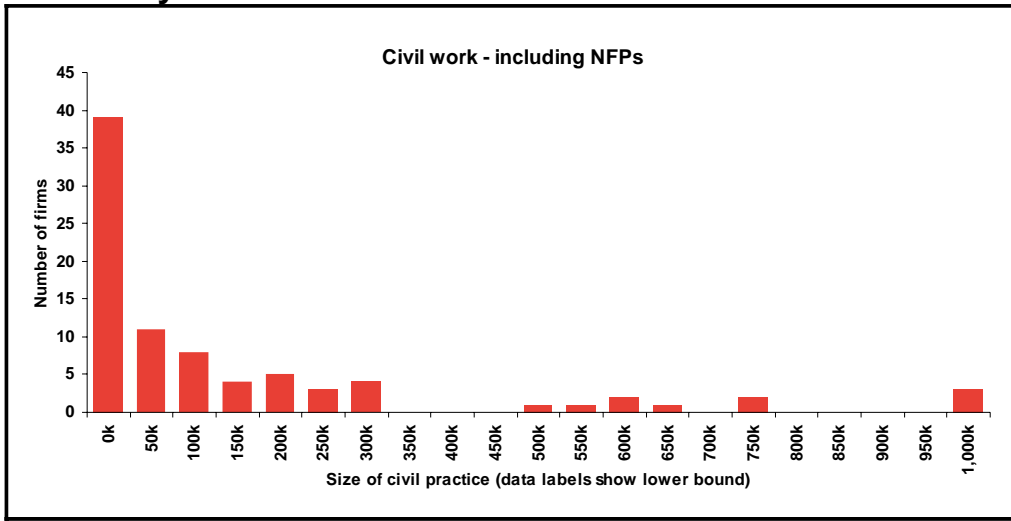


Figure 31: Number of firms with civil practices - Merseyside

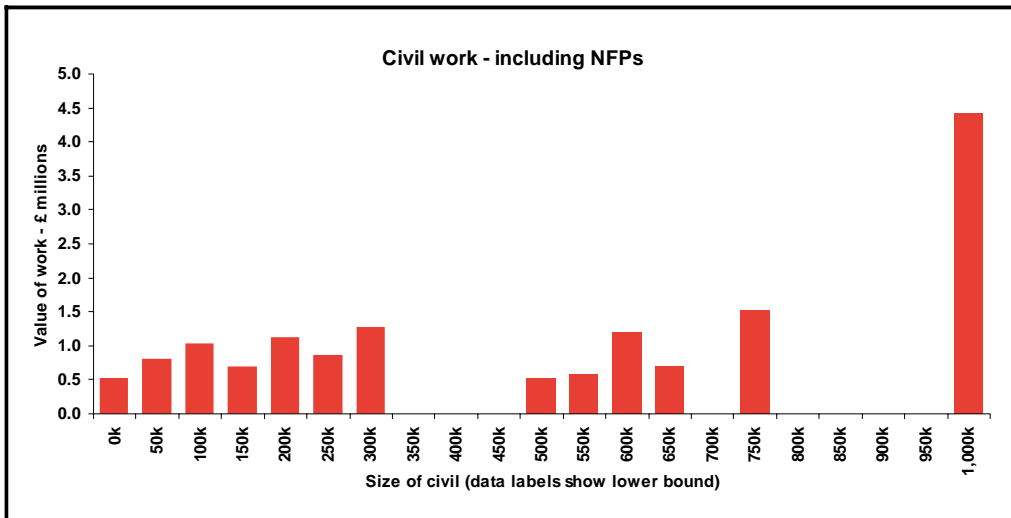


Figure 32: Value of work done by civil practice - Merseyside

North East

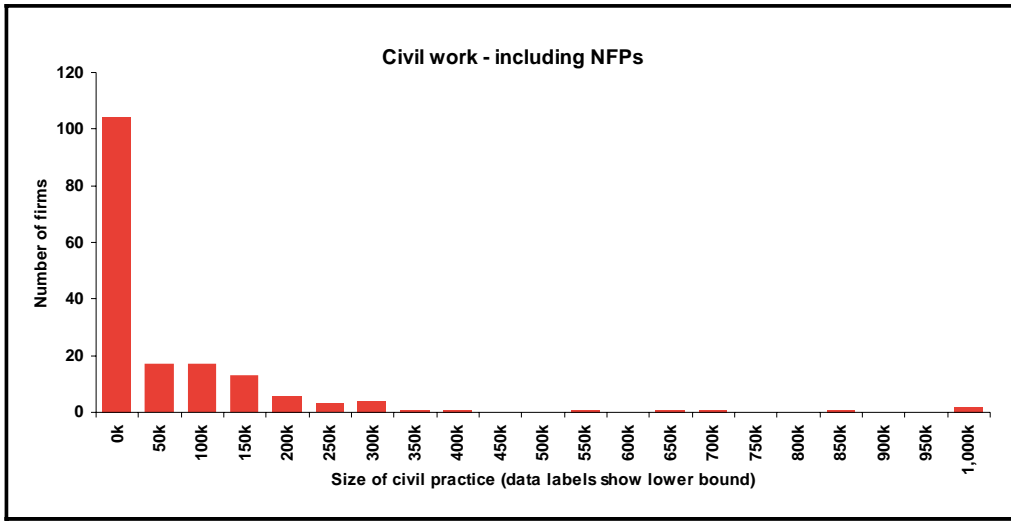


Figure 33: Number of firms with civil practices – North East

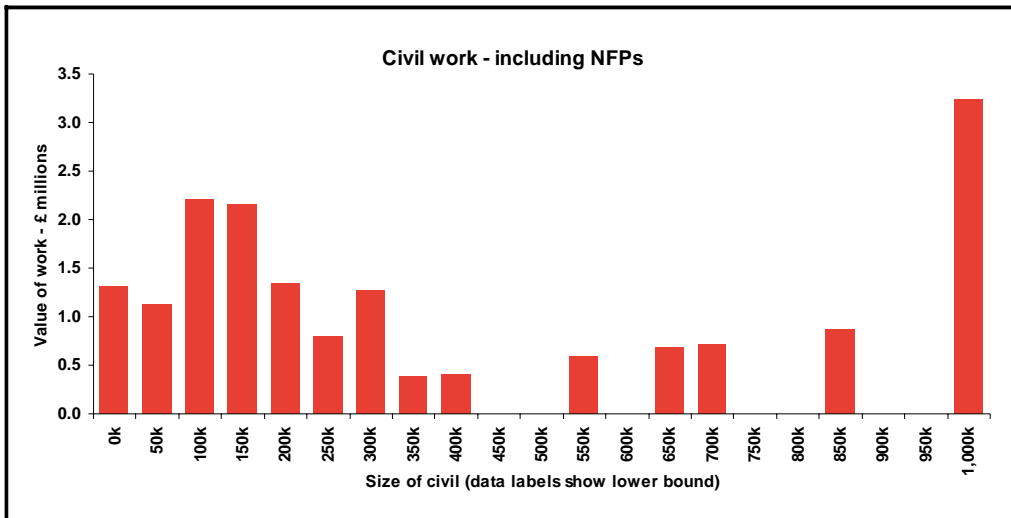


Figure 34: Value of work done by civil practice – North East

North West

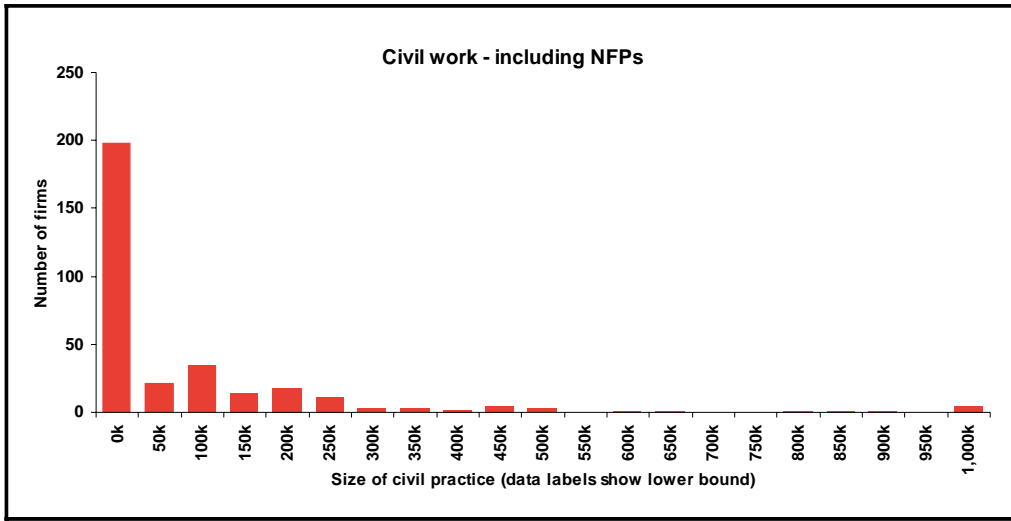


Figure 35: Number of firms with civil practices – North West

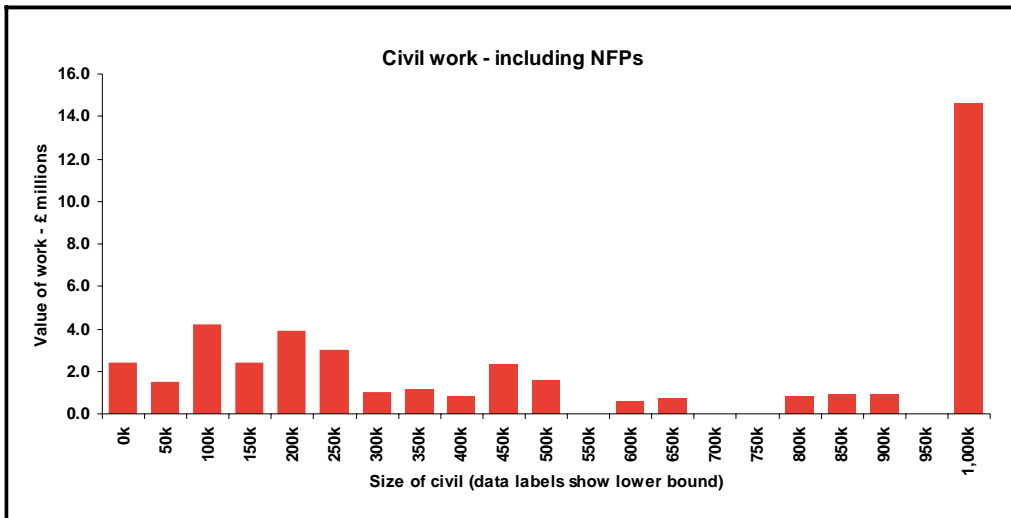


Figure 36: Value of work done by civil practice – North West

South Eastern

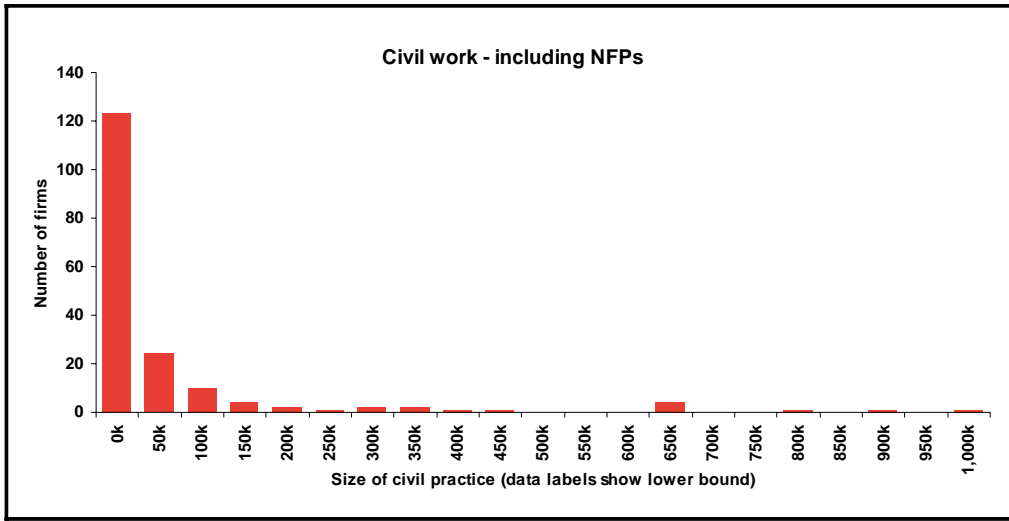


Figure 37: Number of firms with civil practices – South Eastern

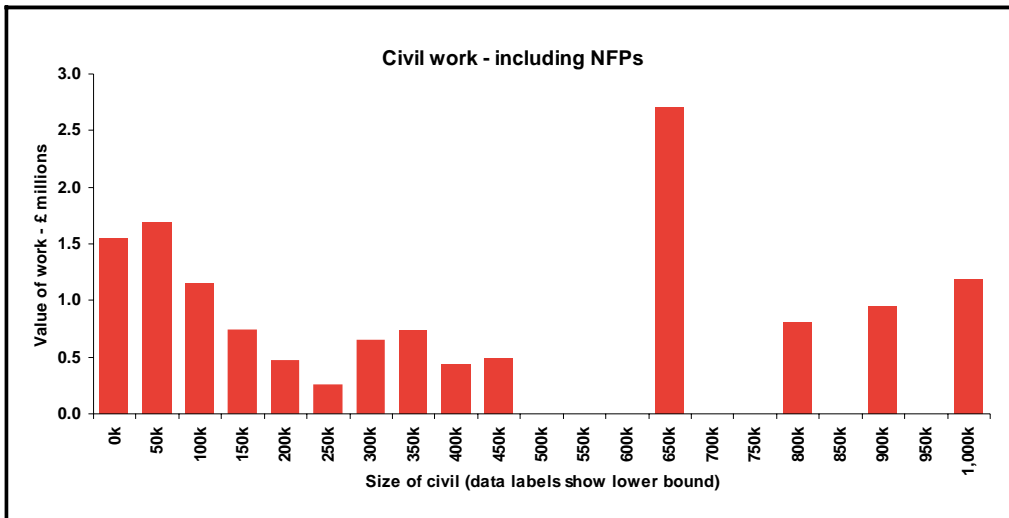


Figure 38: Value of work done by civil practice – South Eastern

South West

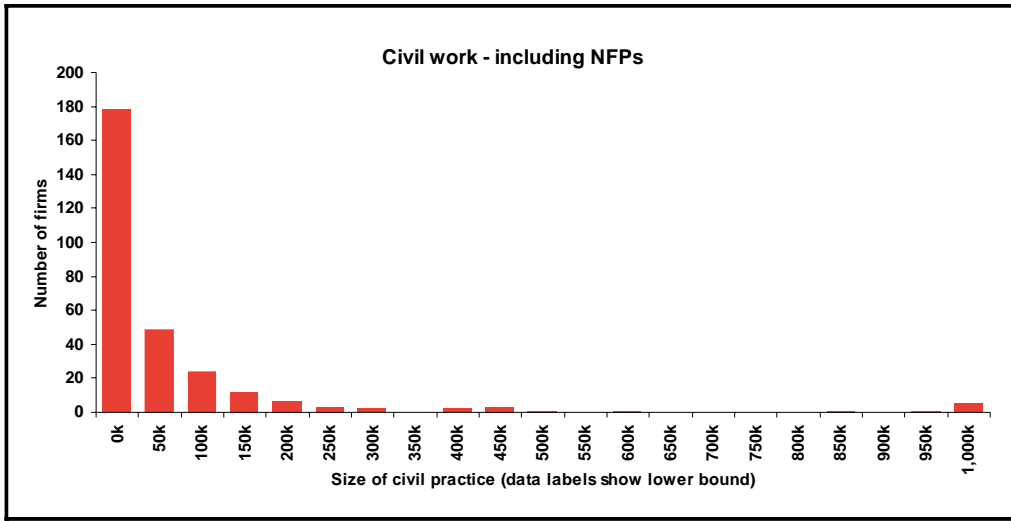


Figure 39: Number of firms with civil practices – South West

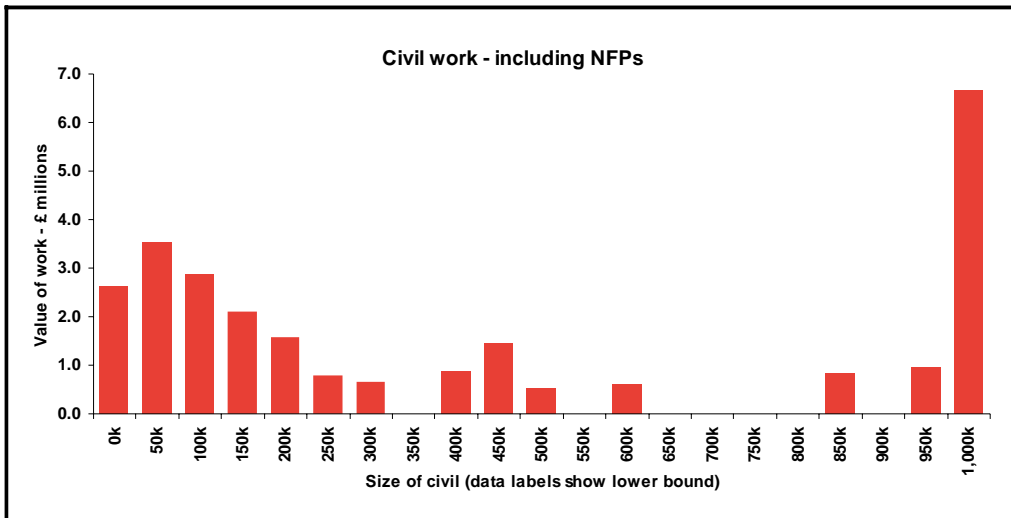


Figure 40: Value of work done by civil practice – South West

Southern

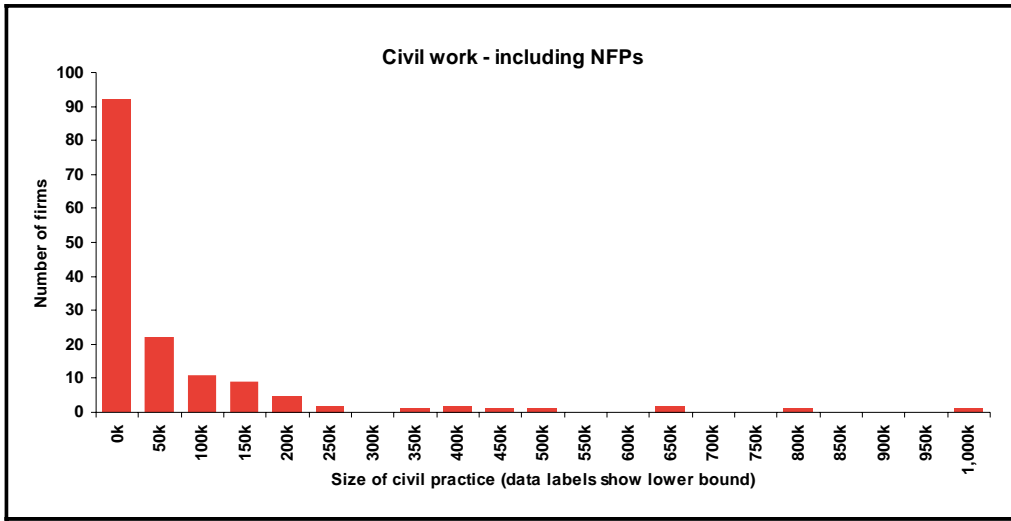


Figure 41: Number of firms with civil practices – Southern

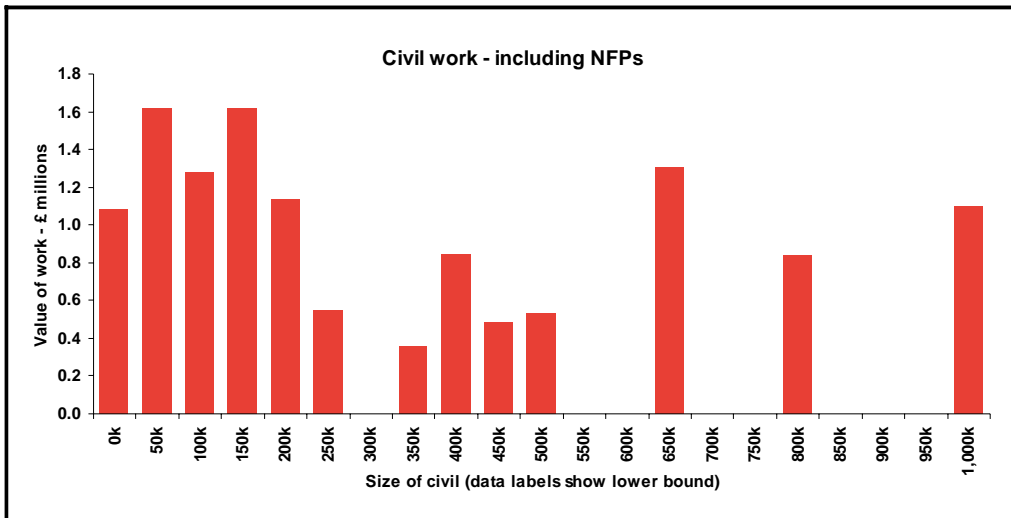


Figure 42: Value of work done by civil practice - Southern

Wales

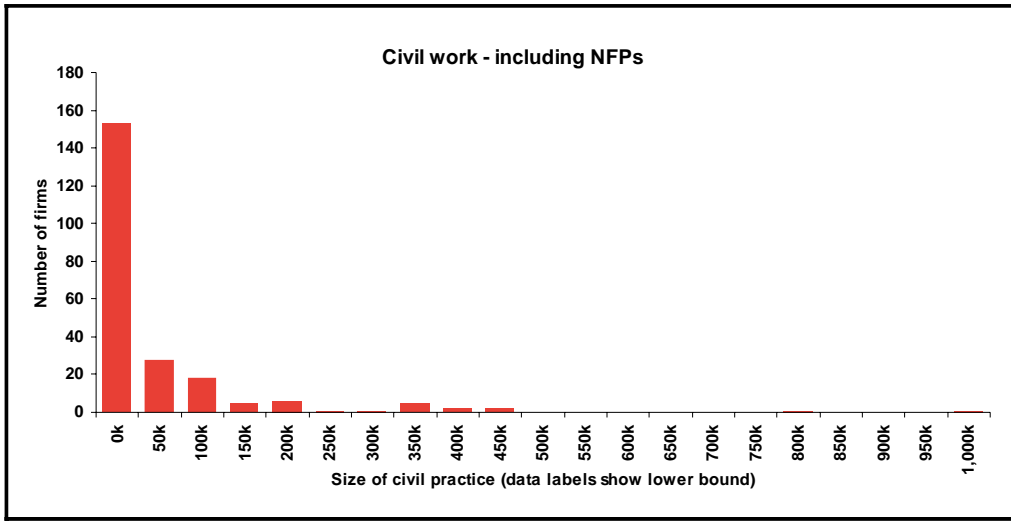


Figure 43: Number of firms with civil practices - Wales

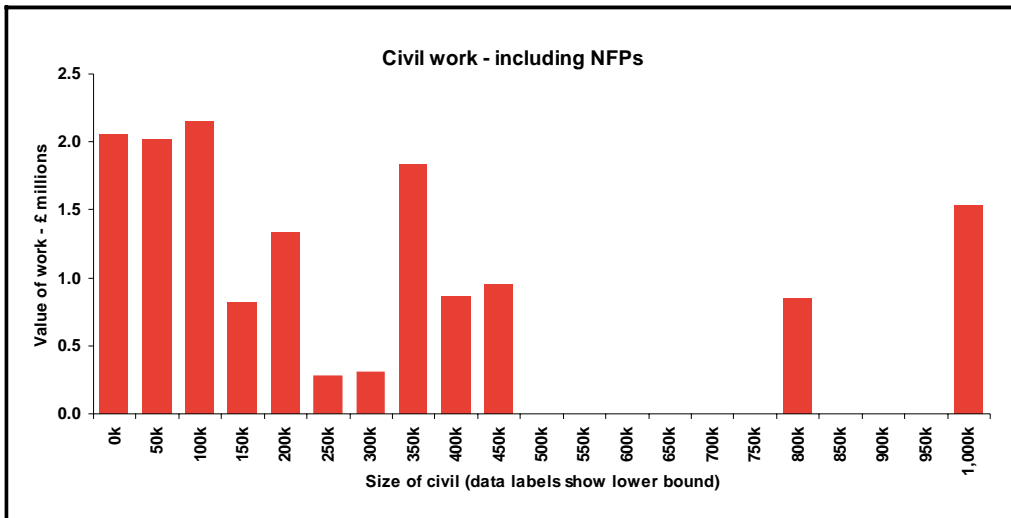


Figure 44: Value of work done by civil practice – Wales

West Midlands

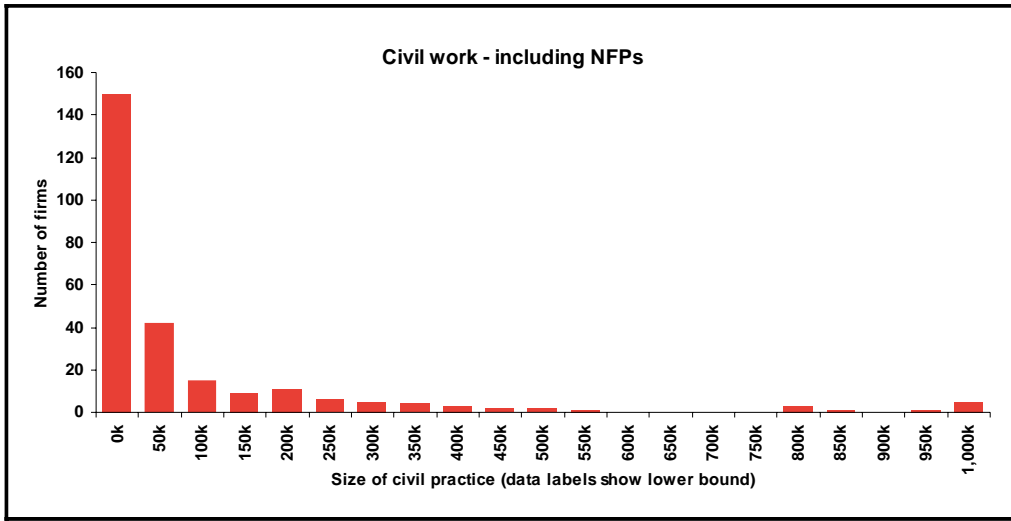


Figure 45: Number of firms with civil practices – West Midlands

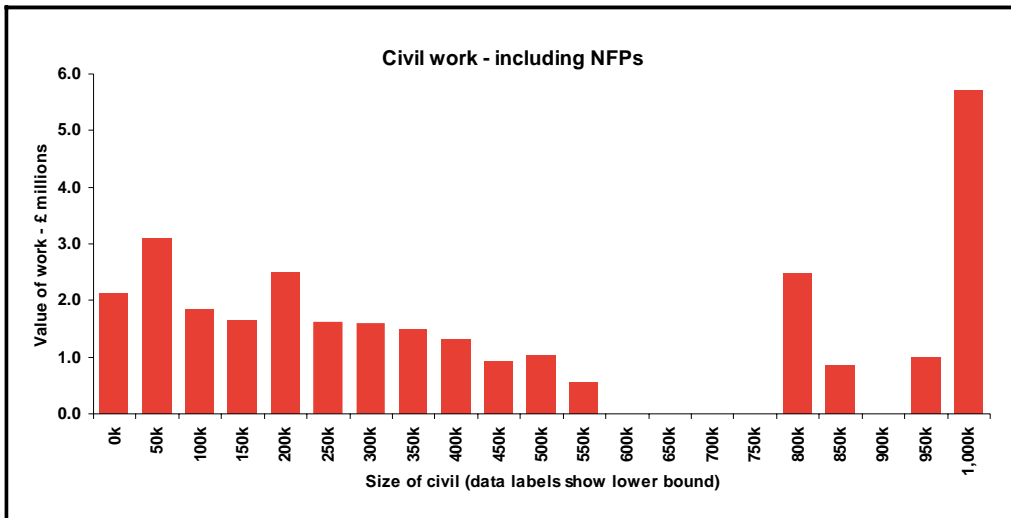


Figure 46: Value of work done by civil practice – West Midlands

Yorkshire & Humberside

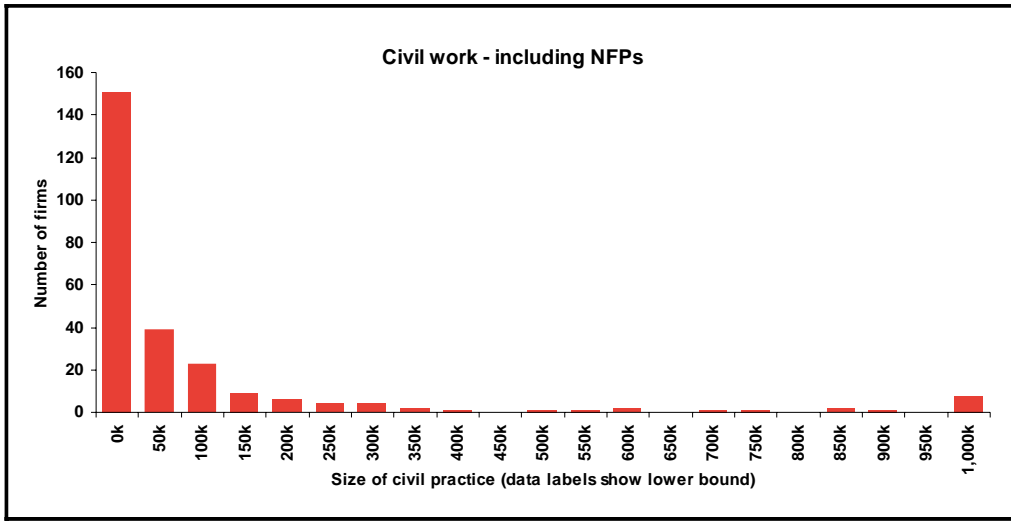


Figure 47: Number of firms with civil practices – Yorkshire & Humberside

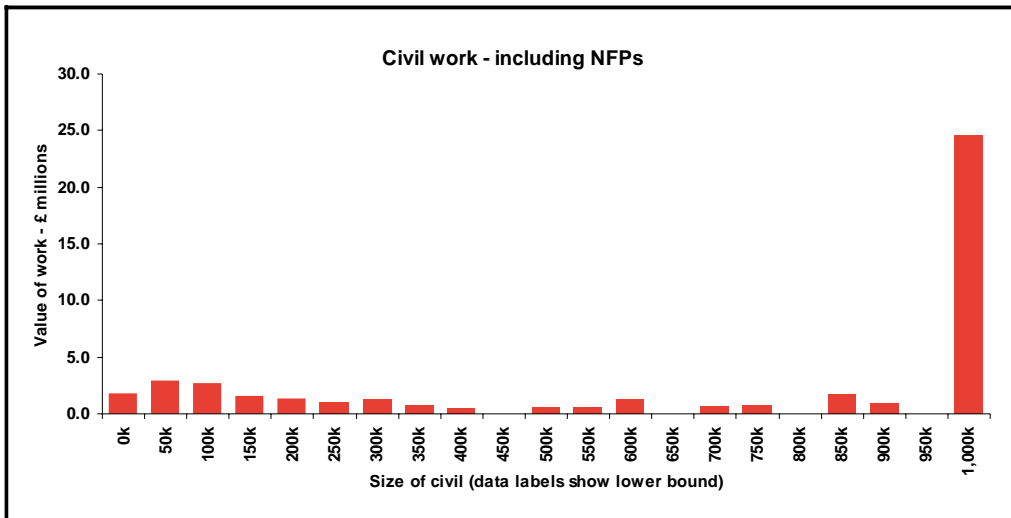


Figure 48: Value of work done by civil practice – Yorkshire & Humberside

SUPPLIER BASE – FAMILY

Eastern

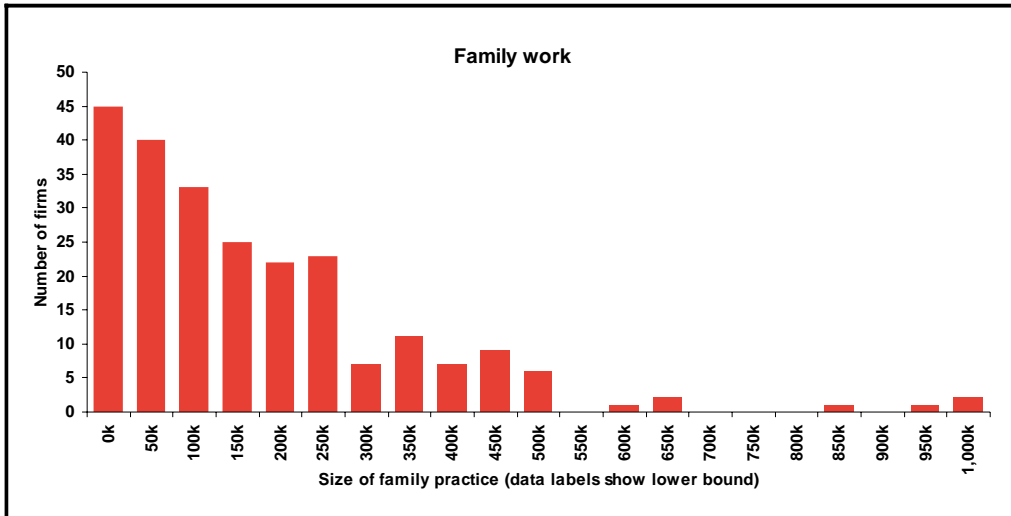


Figure 49: Number of firms with family practices – Eastern

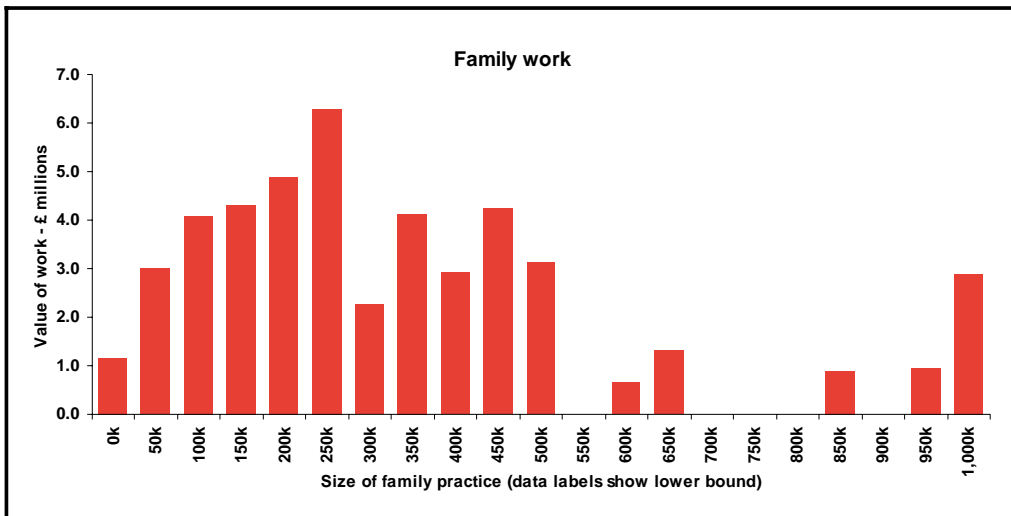


Figure 50: Value of work done by family practice – Eastern

East Midlands

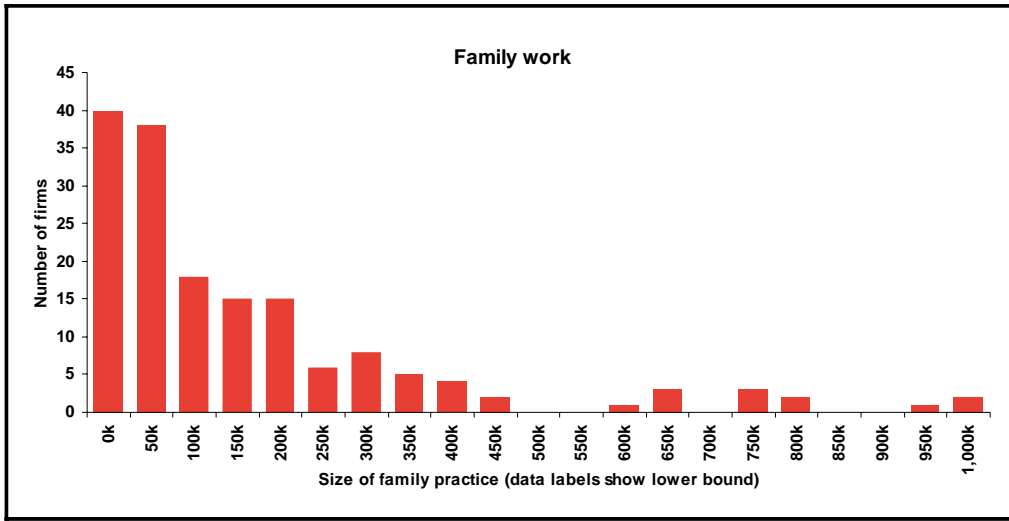


Figure 51: Number of firms with family practices – East Midlands

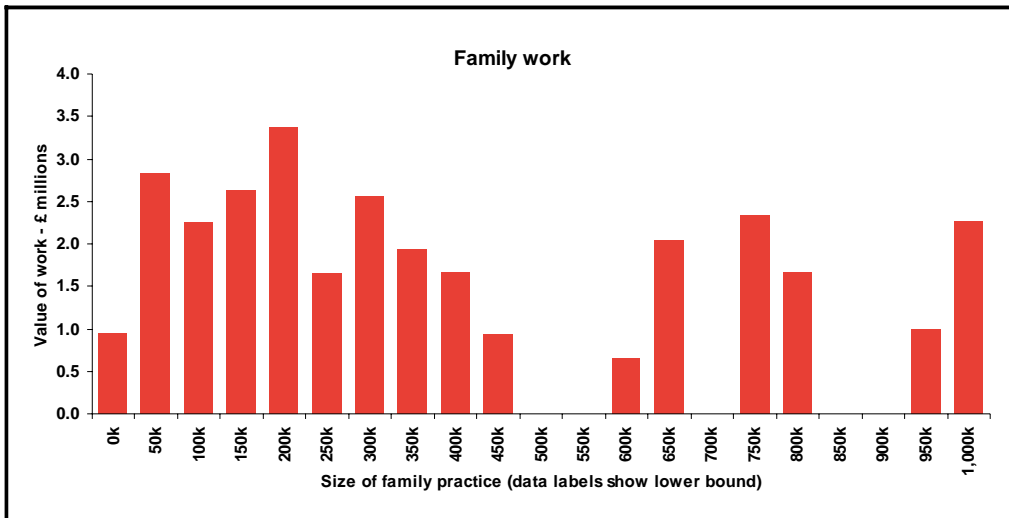


Figure 52: Value of work done by family practice – East Midlands

London

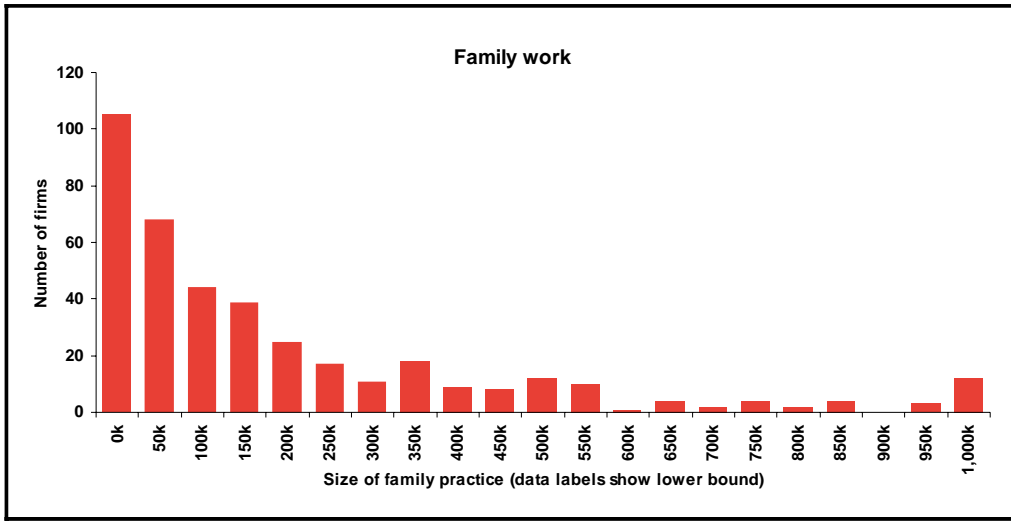


Figure 53: Number of firms with family practices – London

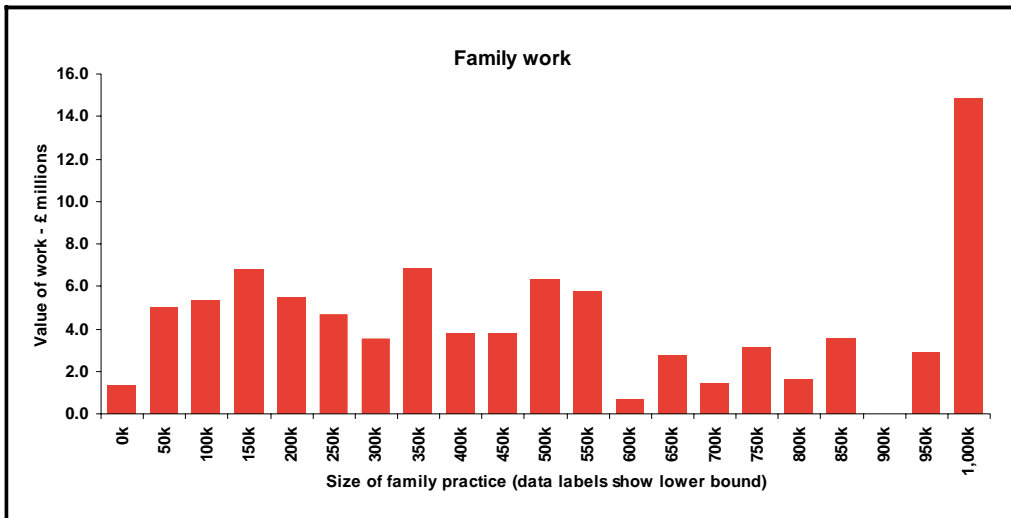


Figure 54: Value of work done by family practice – London

Merseyside

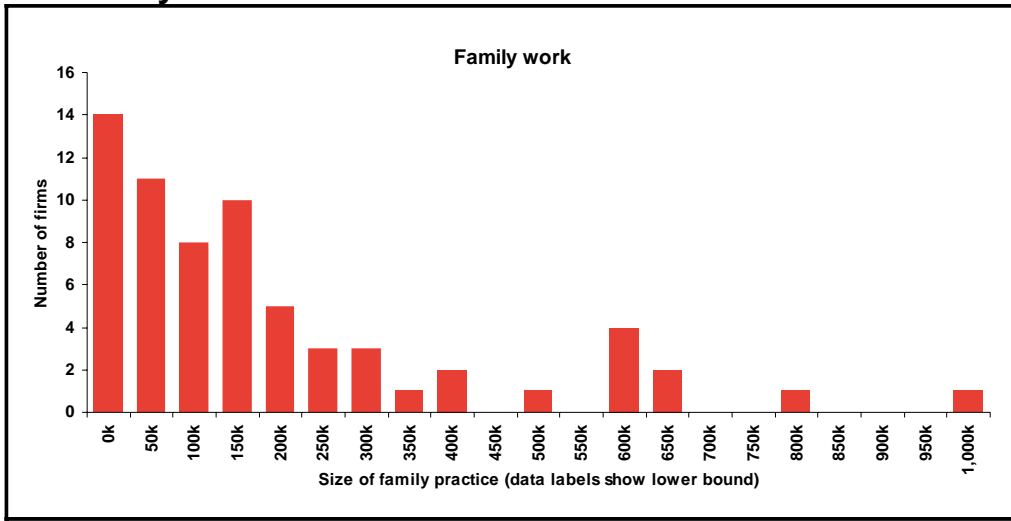


Figure 55: Number of firms with family practices – Merseyside

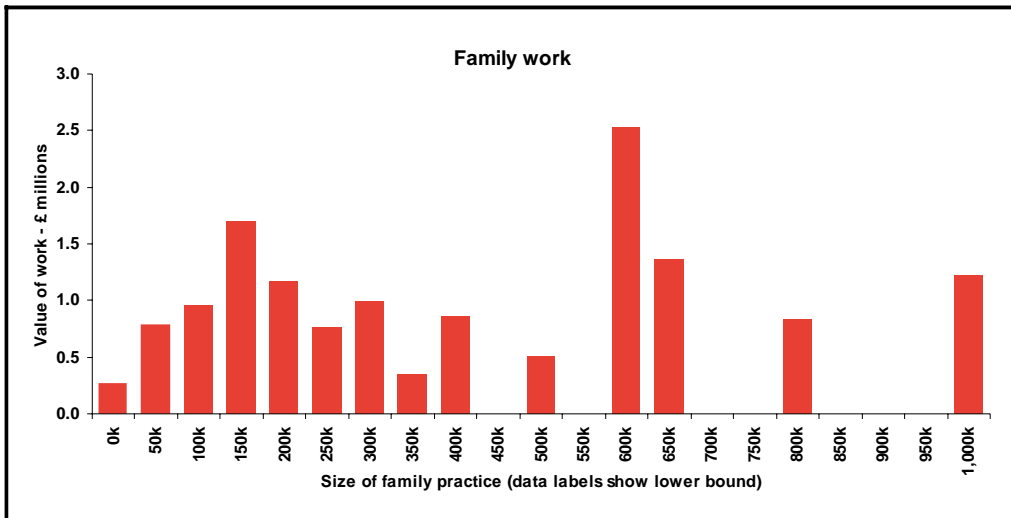


Figure 56: Value of work done by family practice - Merseyside

North East

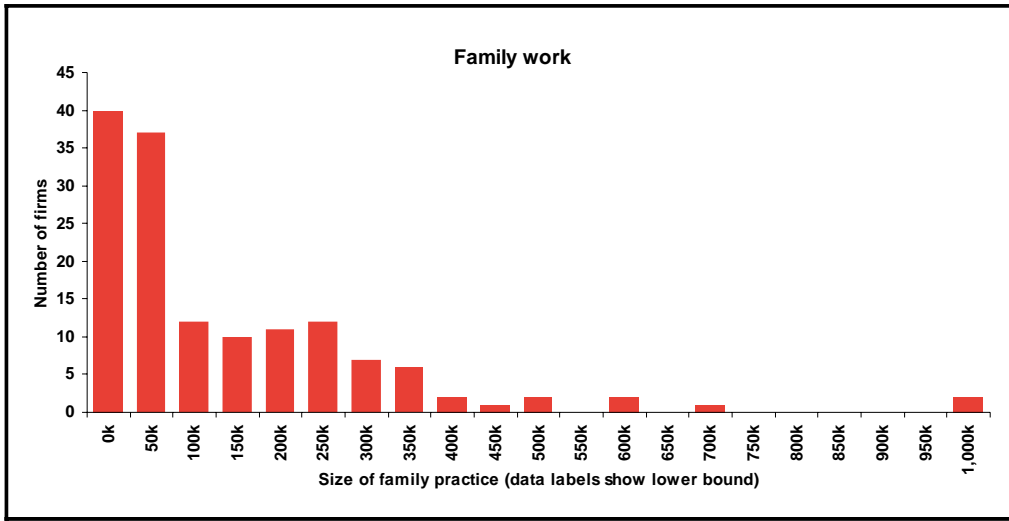


Figure 57: Number of firms with family practices – North East

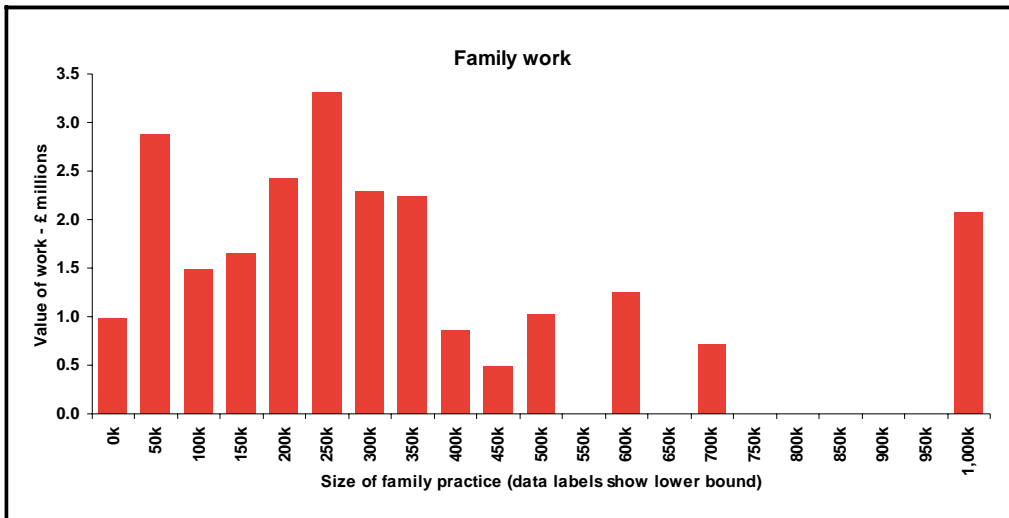


Figure 58: Value of work done by family practice – North East

North West

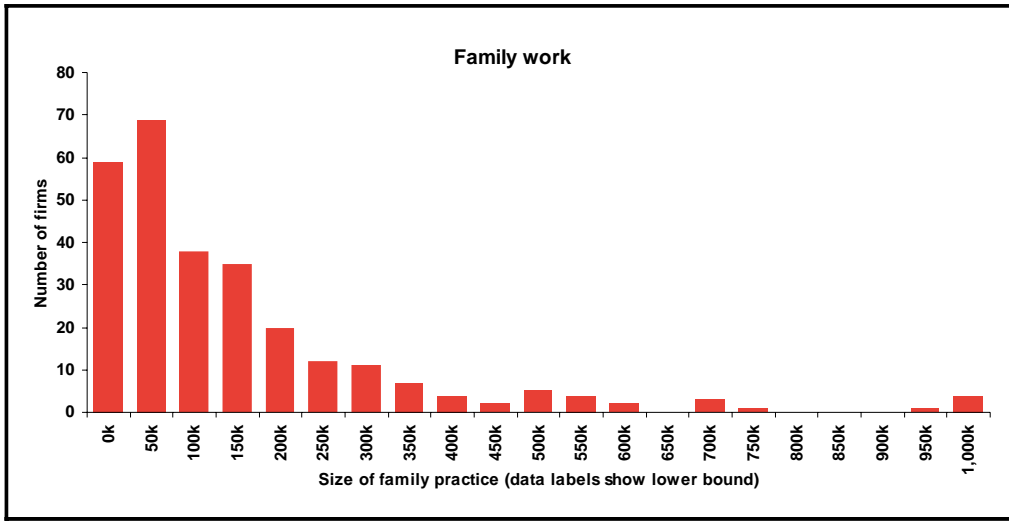


Figure 59: Number of firms with family practices – North West

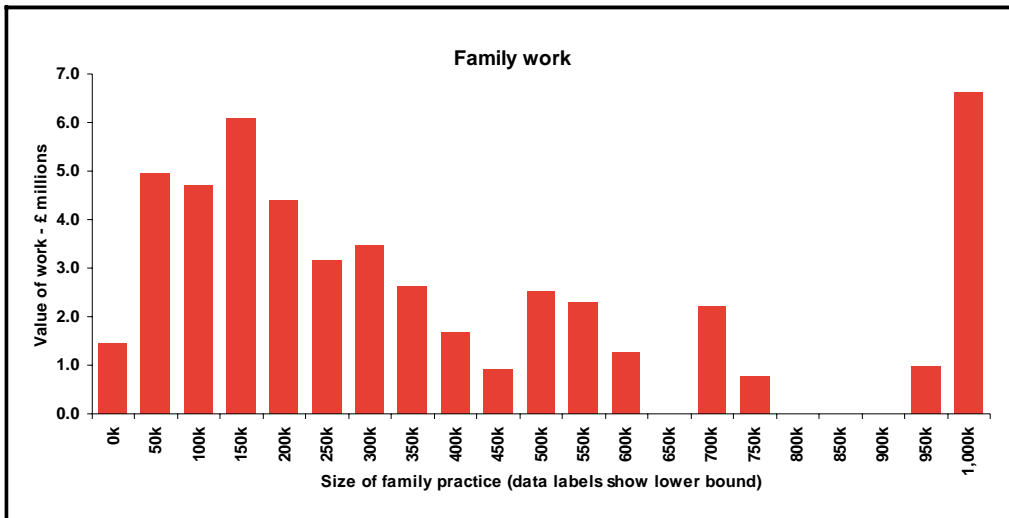


Figure 60: Value of work done by family practice – North West

South Eastern

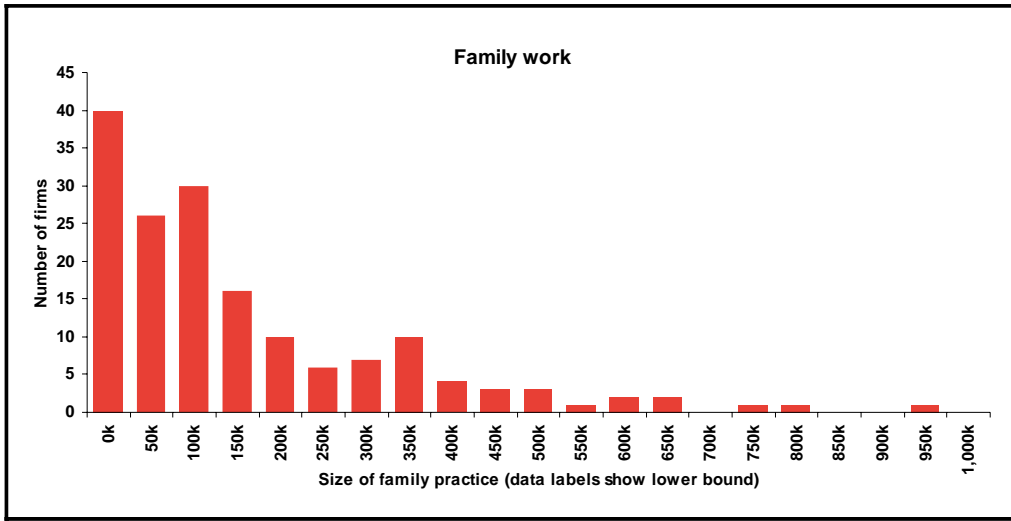


Figure 61: Number of firms with family practices – South Eastern

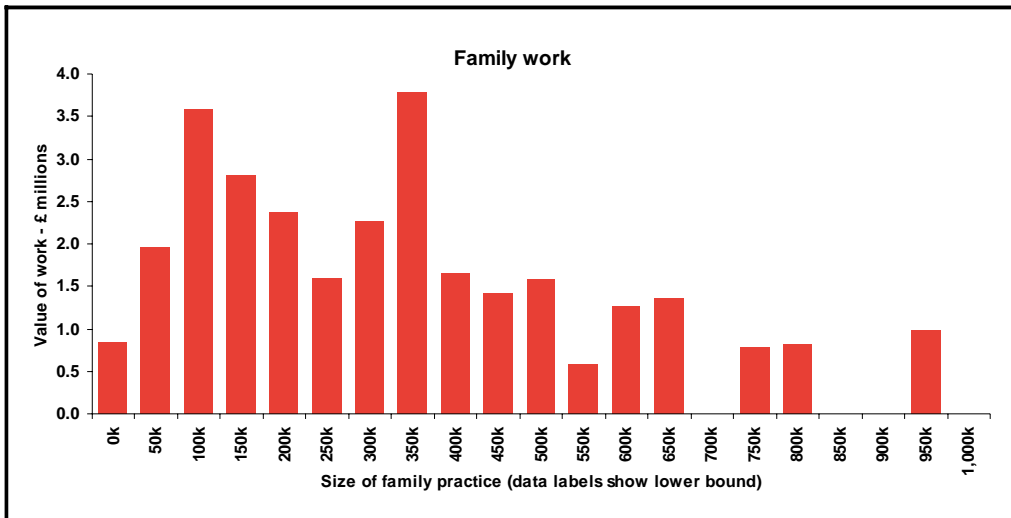


Figure 62: Value of work done by family practice – South Eastern

South West

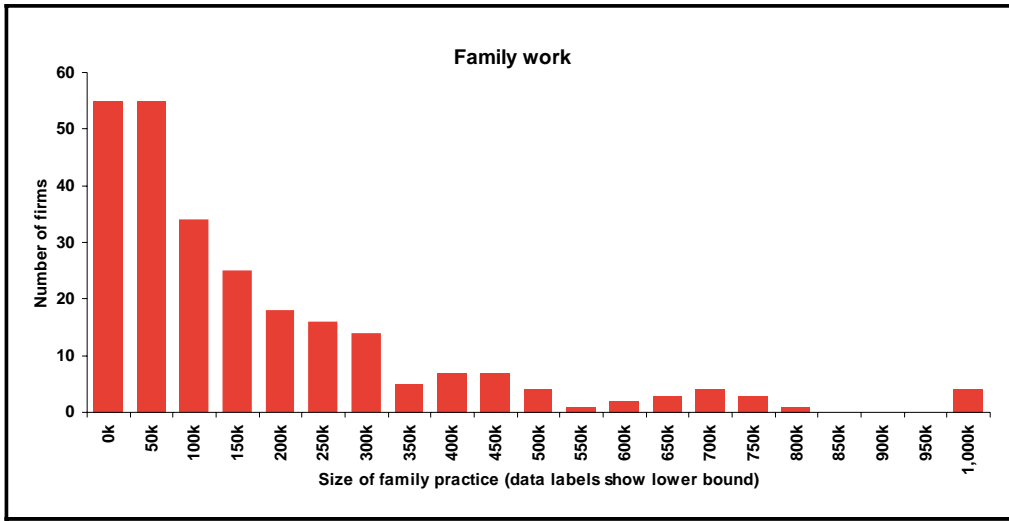


Figure 63: Number of firms with family practices – South West

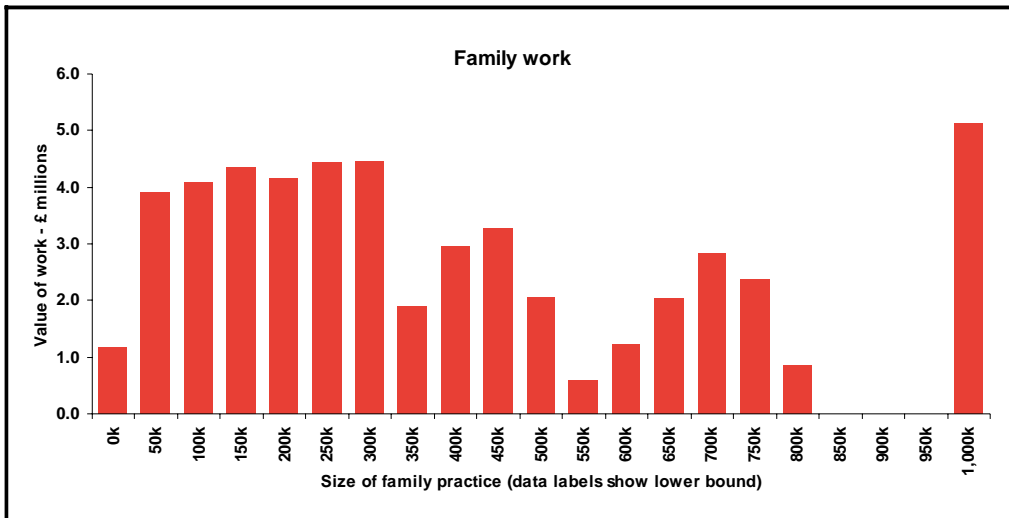


Figure 64: Value of work done by family practice – South West

Southern

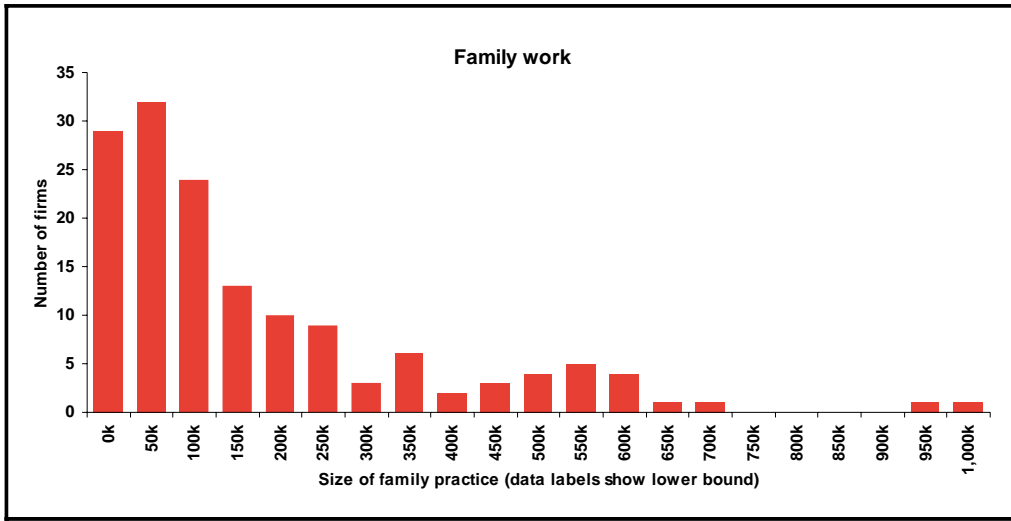


Figure 65: Number of firms with family practices – Southern

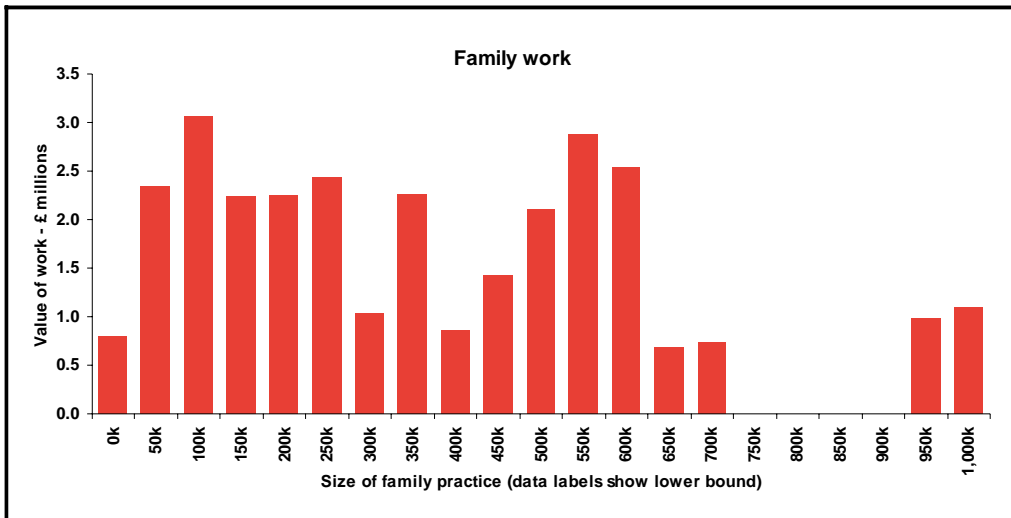


Figure 66: Value of work done by family practice - Southern

Wales

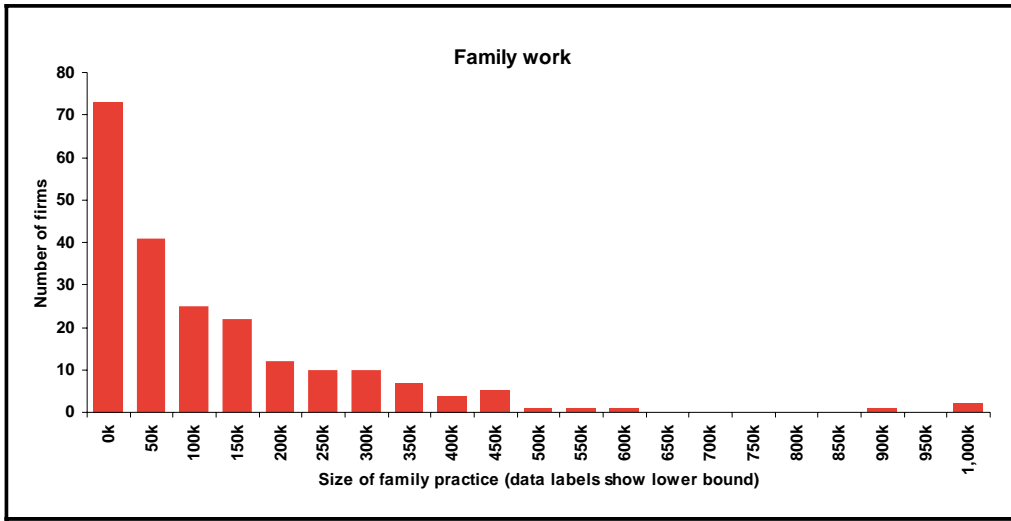


Figure 67: Number of firms with family practices - Wales

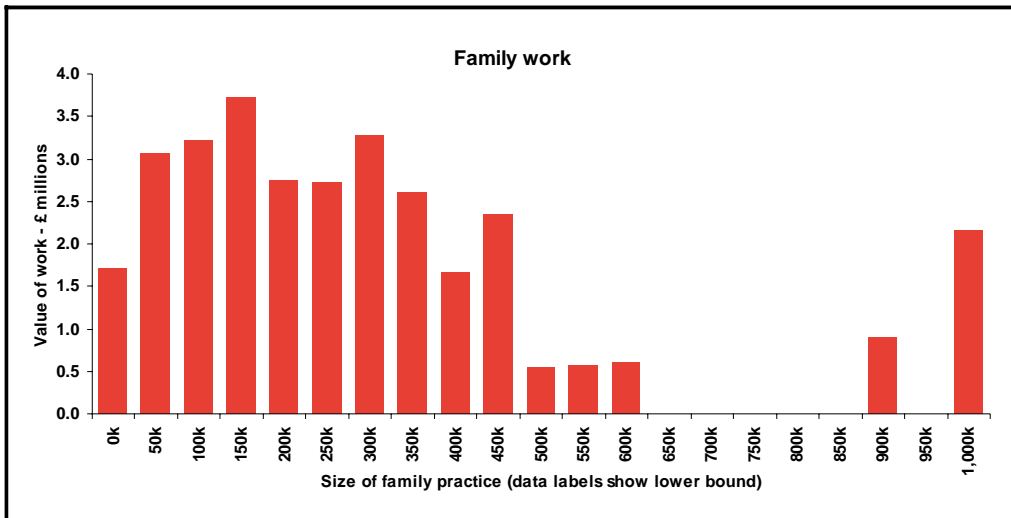


Figure 68: Value of work done by family practice – Wales

West Midlands

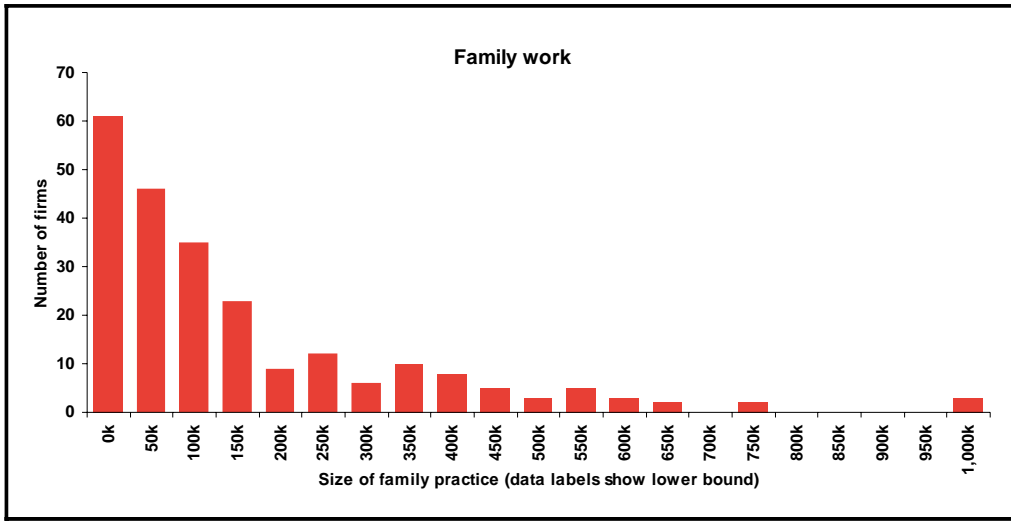


Figure 69: Number of firms with family practices – West Midlands

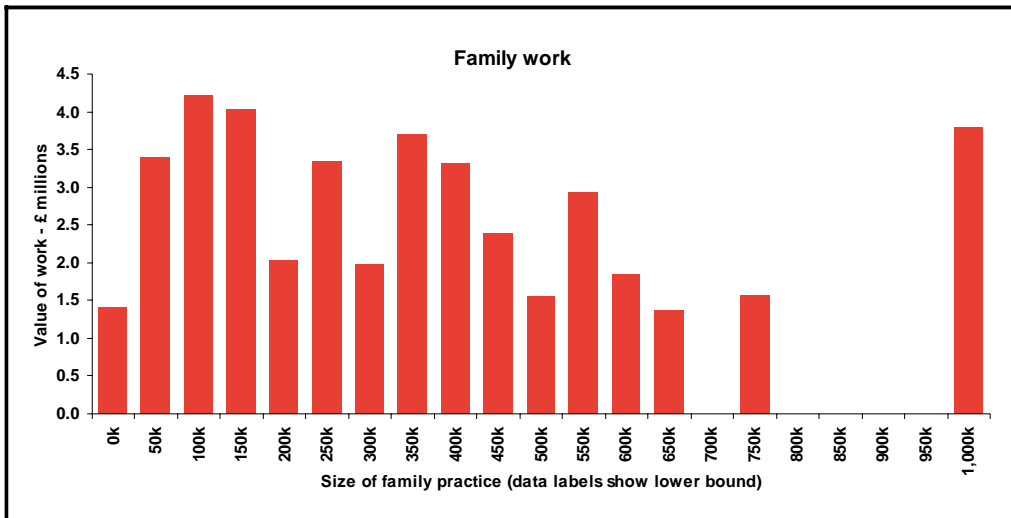


Figure 70: Value of work done by family practice – West Midlands

Yorkshire & Humberside

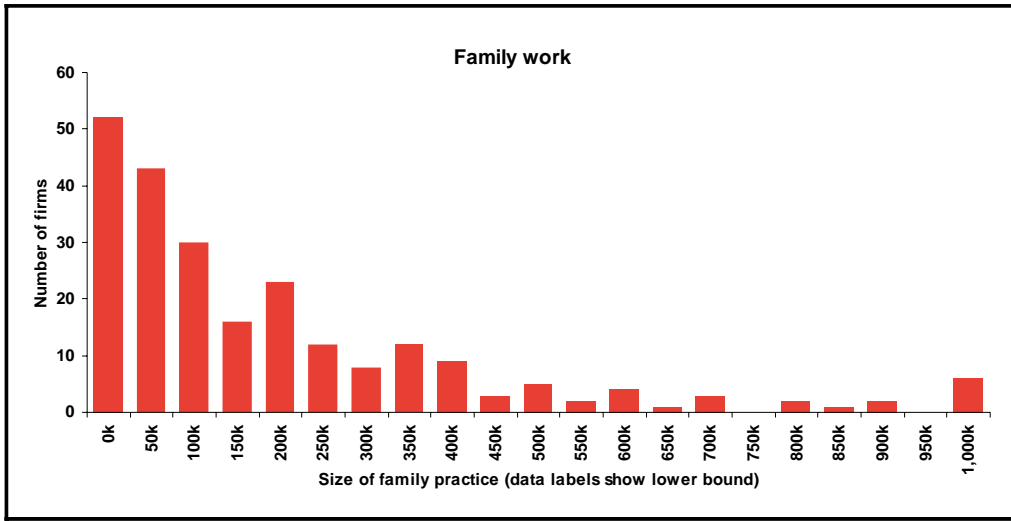


Figure 71: Number of firms with family practices – Yorkshire & Humberside

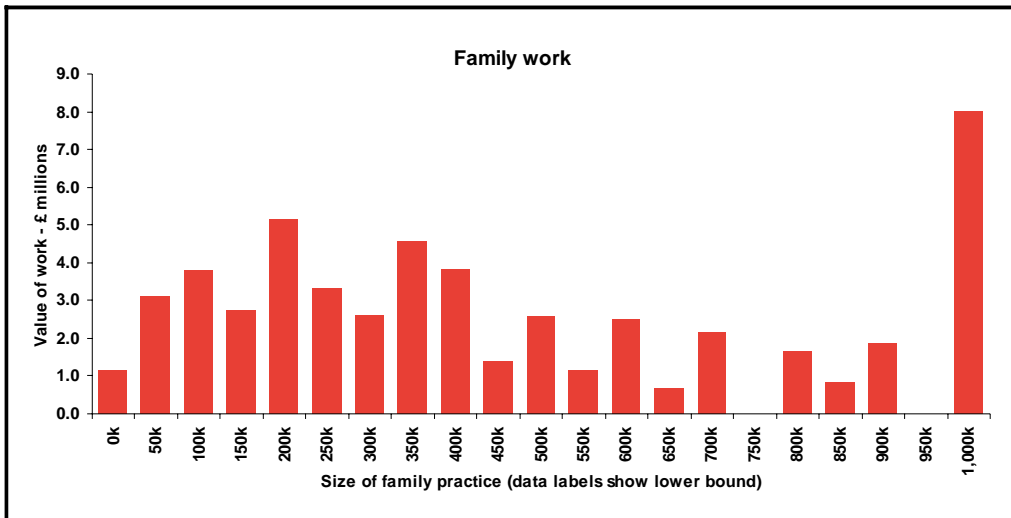


Figure 72: Value of work done by family practice – Yorkshire & Humberside

SUPPLIER BASE – MIX OF WORK UNDERTAKEN BY FIRMS

Eastern

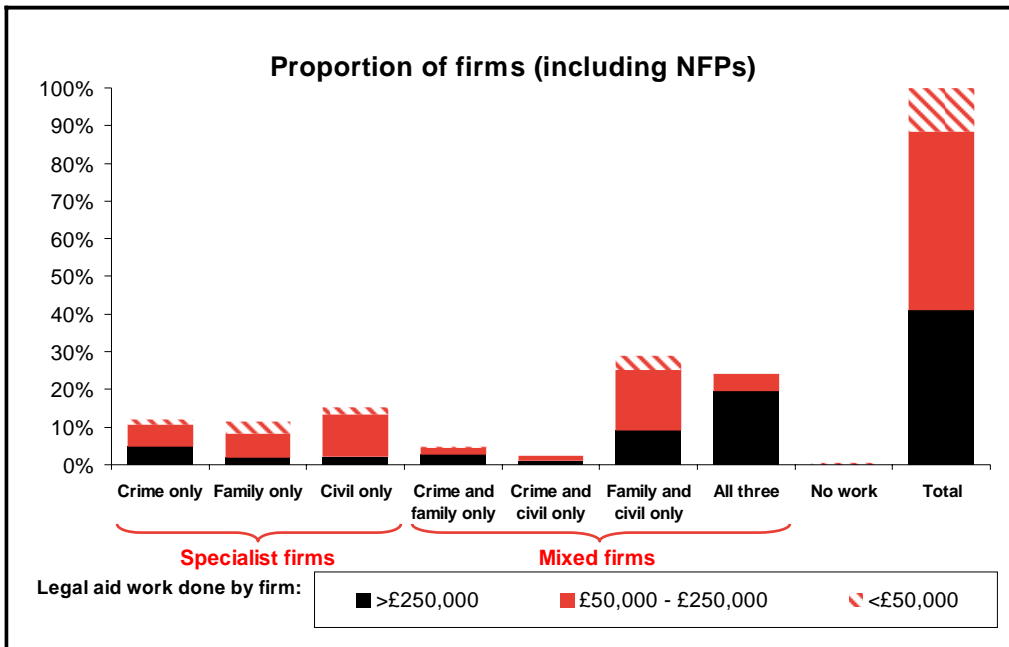


Figure 73: Number of specialist and mixed firms – Eastern

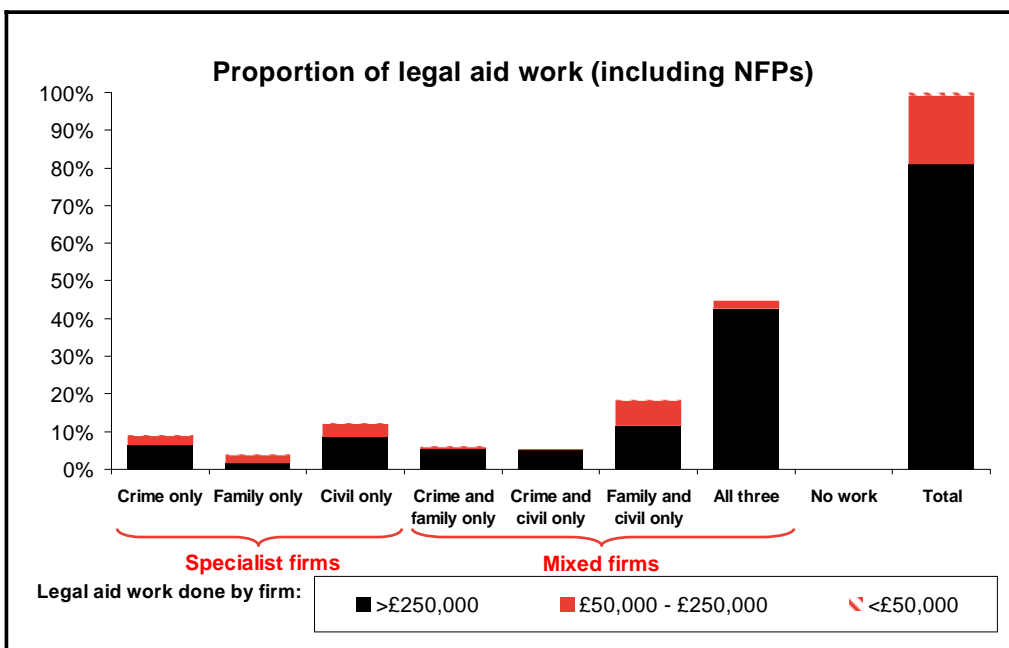


Figure 74: Value of work done by specialist and mixed firms – Eastern

East Midlands

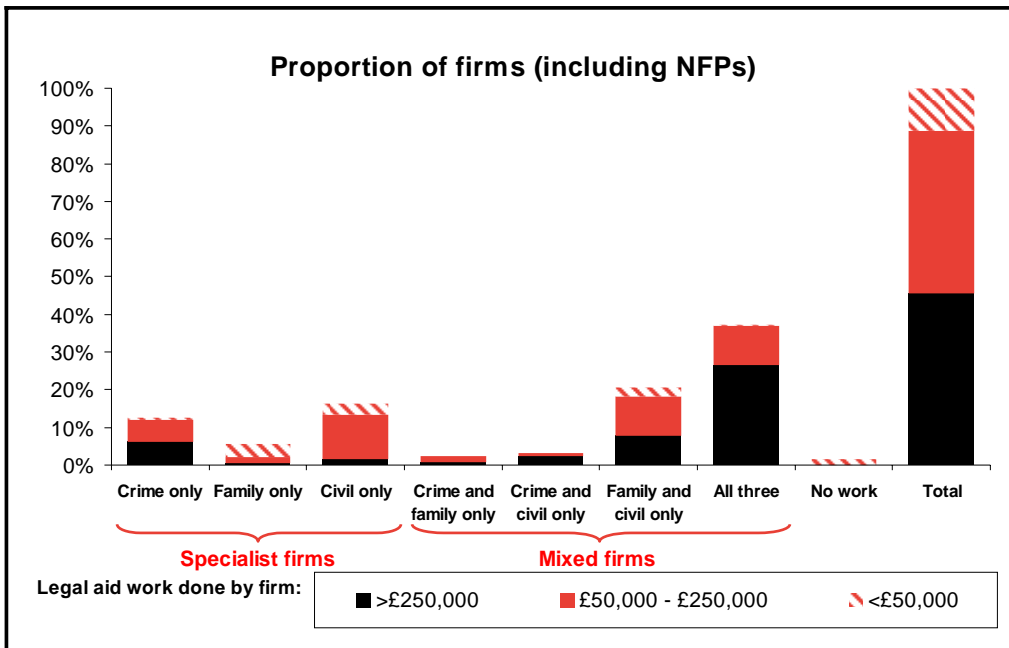


Figure 75: Number of specialist and mixed firms – East Midlands

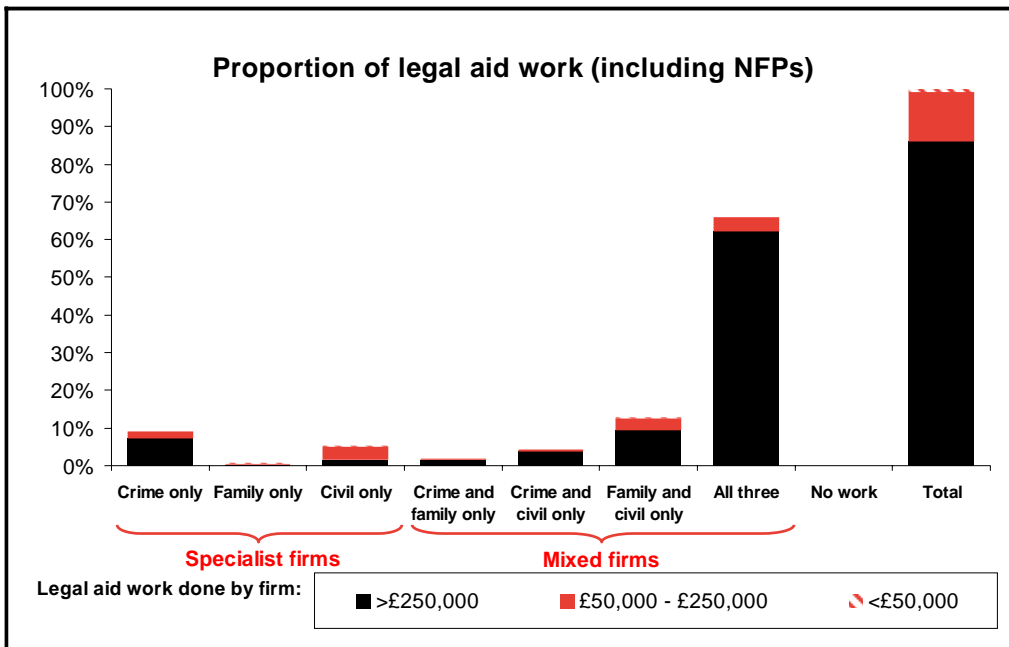


Figure 76: Value of work done by specialist and mixed firms – East Midlands

London

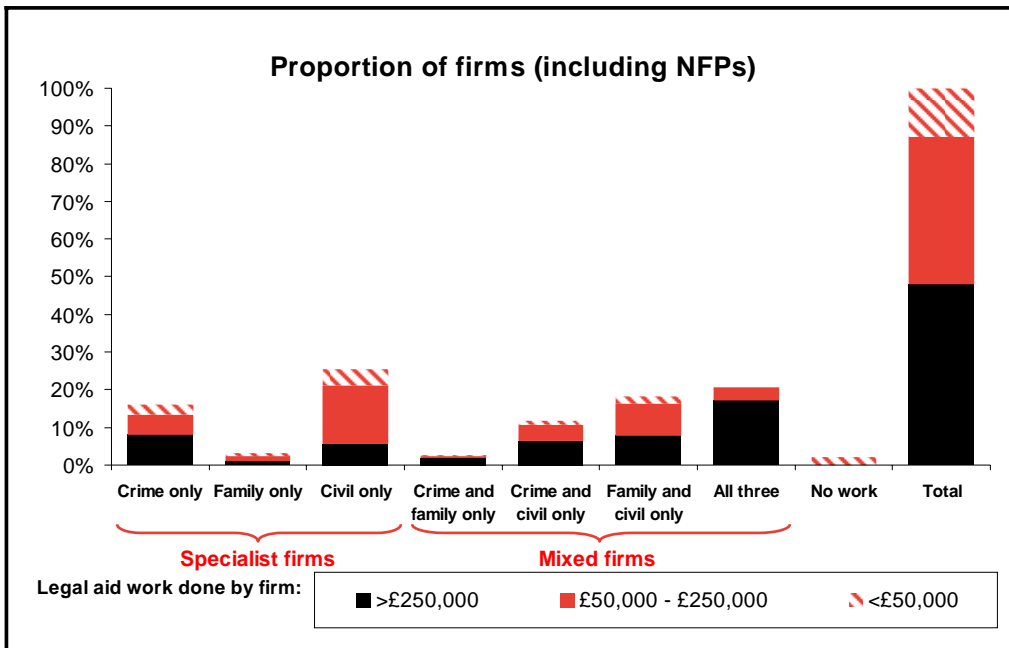


Figure 77: Number of specialist and mixed firms – London

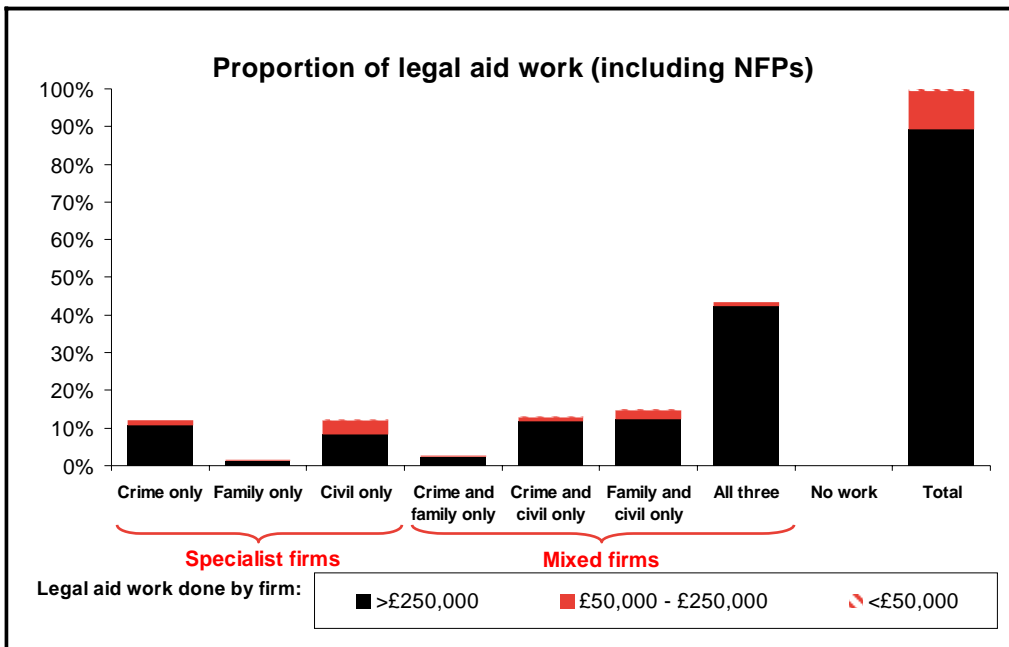


Figure 78: Value of work done by specialist and mixed firms – London

Merseyside

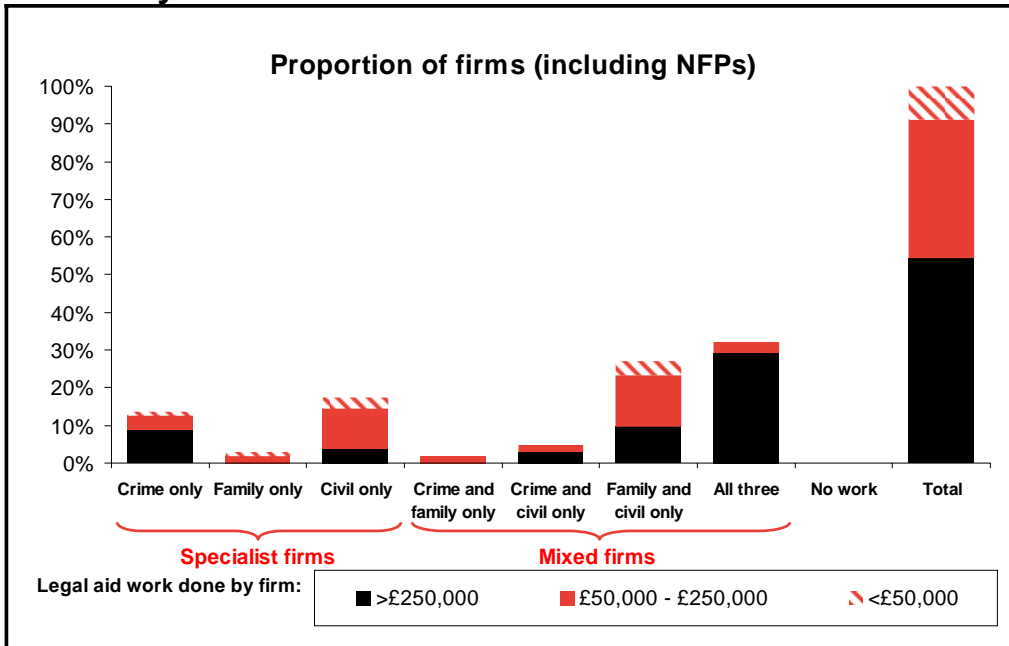


Figure 79: Number of specialist and mixed firms – Merseyside

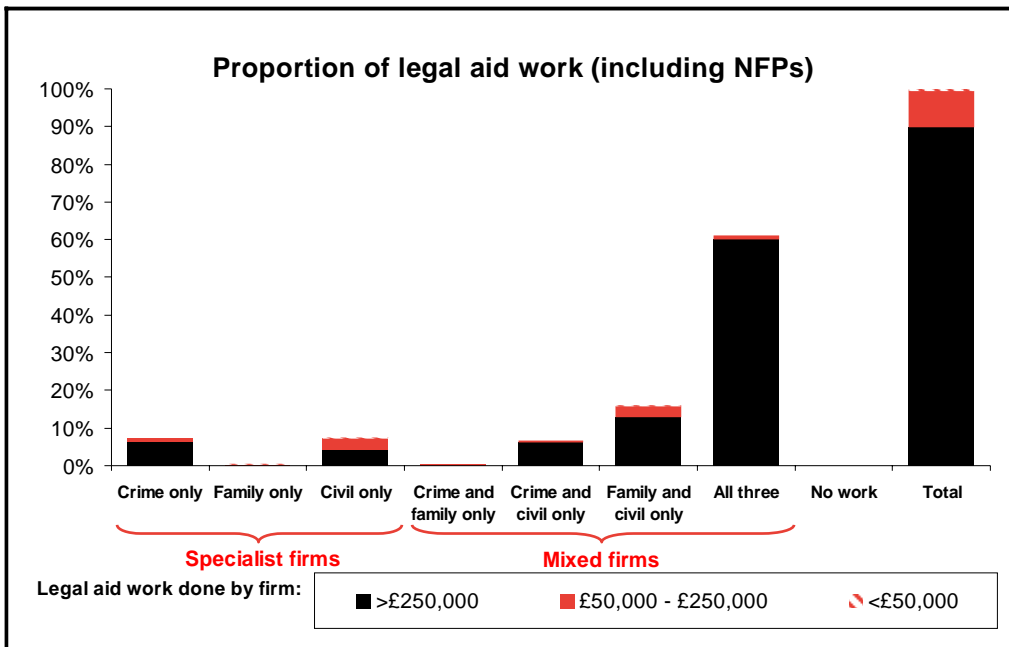


Figure 80: Value of work done by specialist and mixed firms – Merseyside

North East

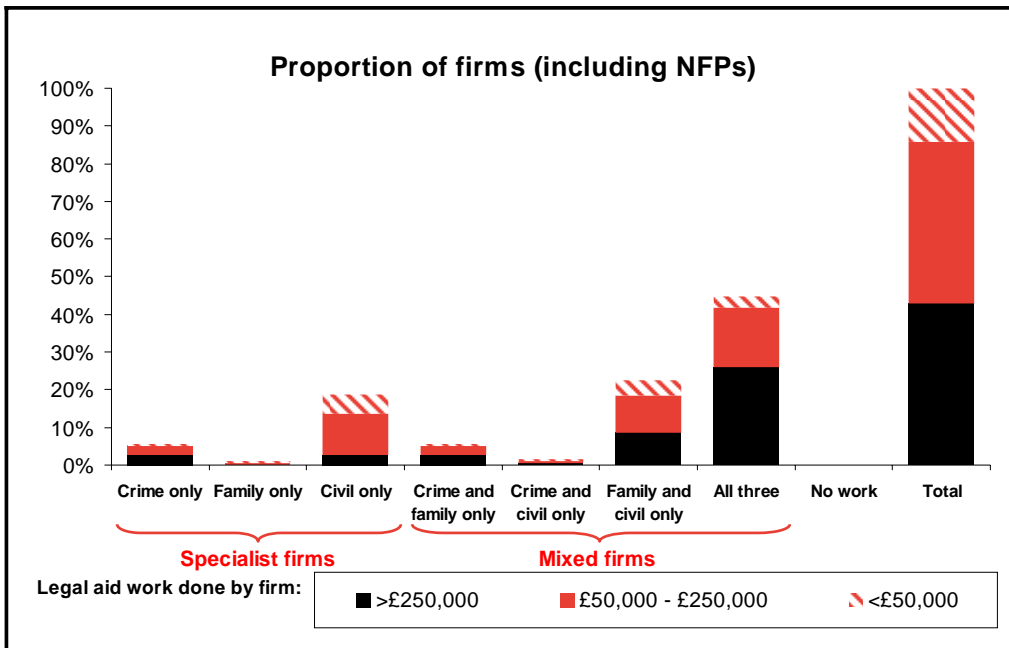


Figure 81: Number of specialist and mixed firms – North East

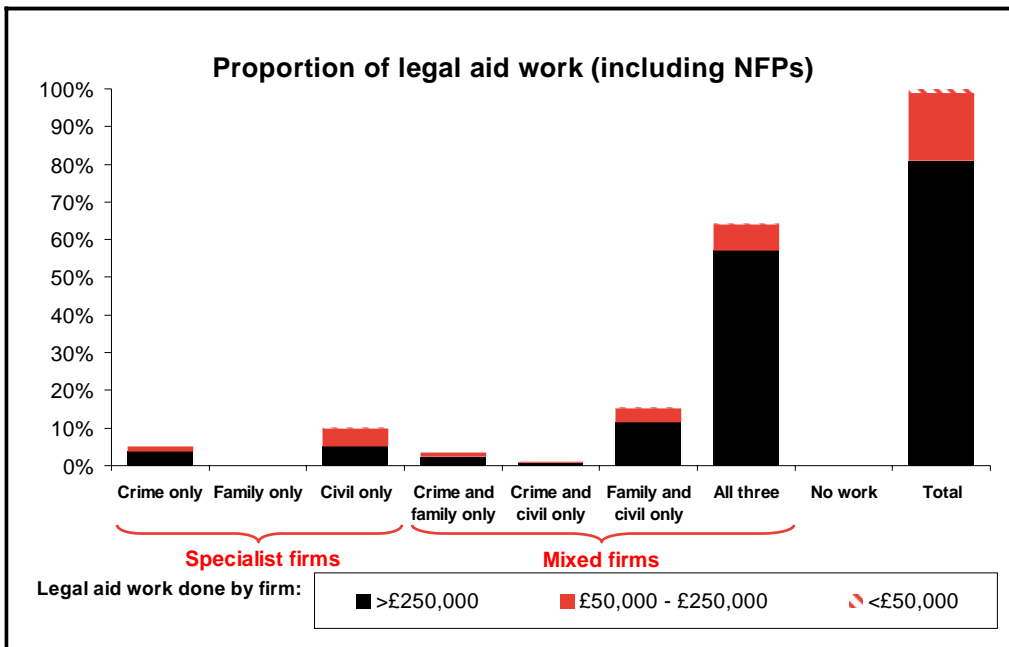


Figure 82: Value of work done by specialist and mixed firms – North East

North West

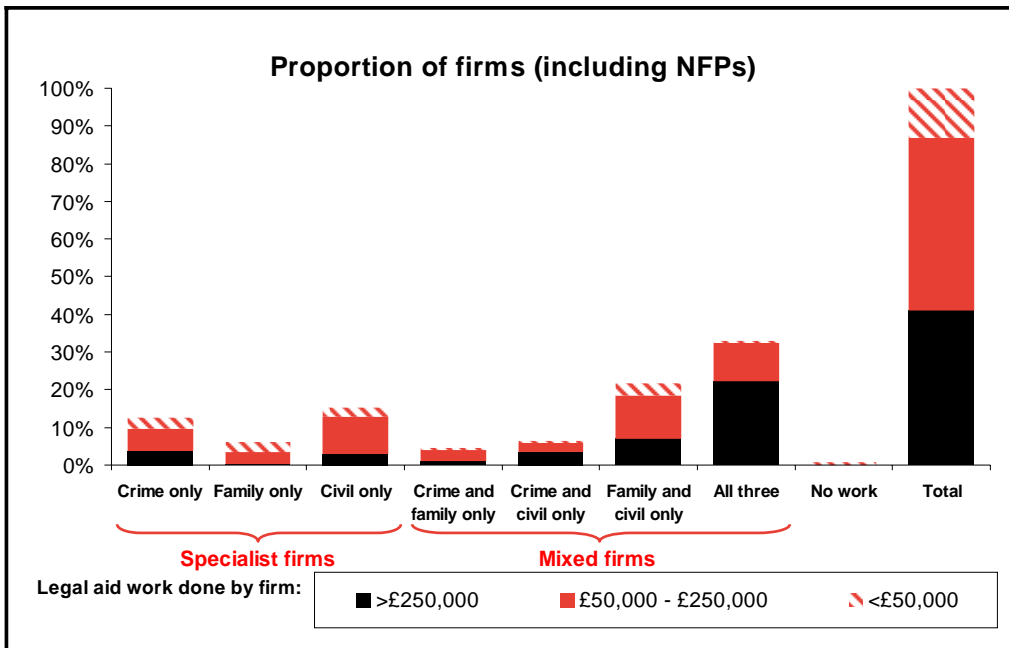


Figure 83: Number of specialist and mixed firms – North West

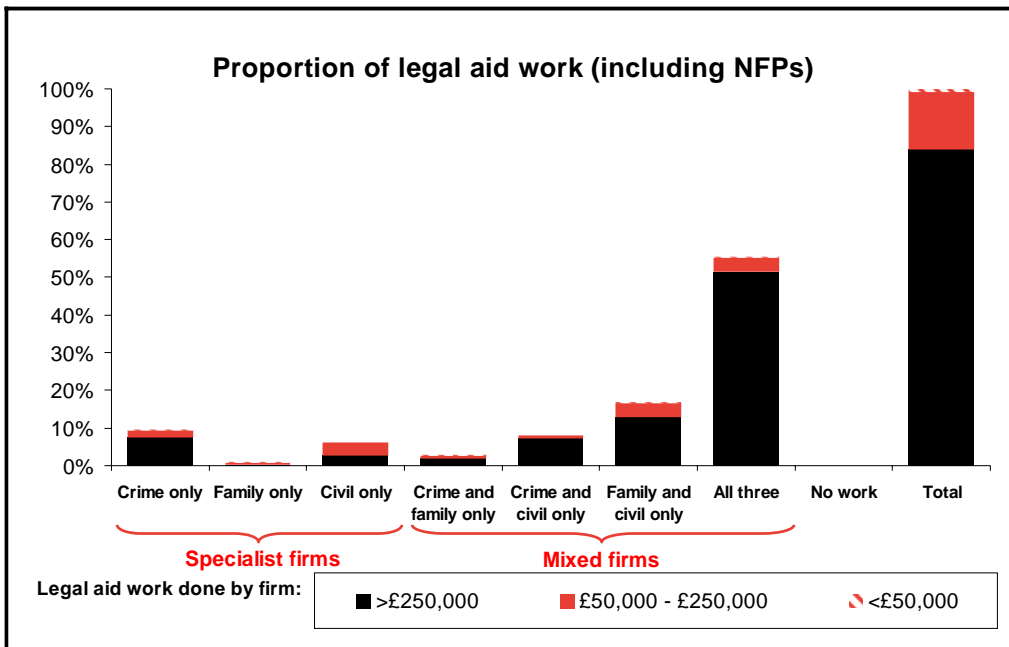


Figure 84: Value of work done by specialist and mixed firms – North West

South Eastern

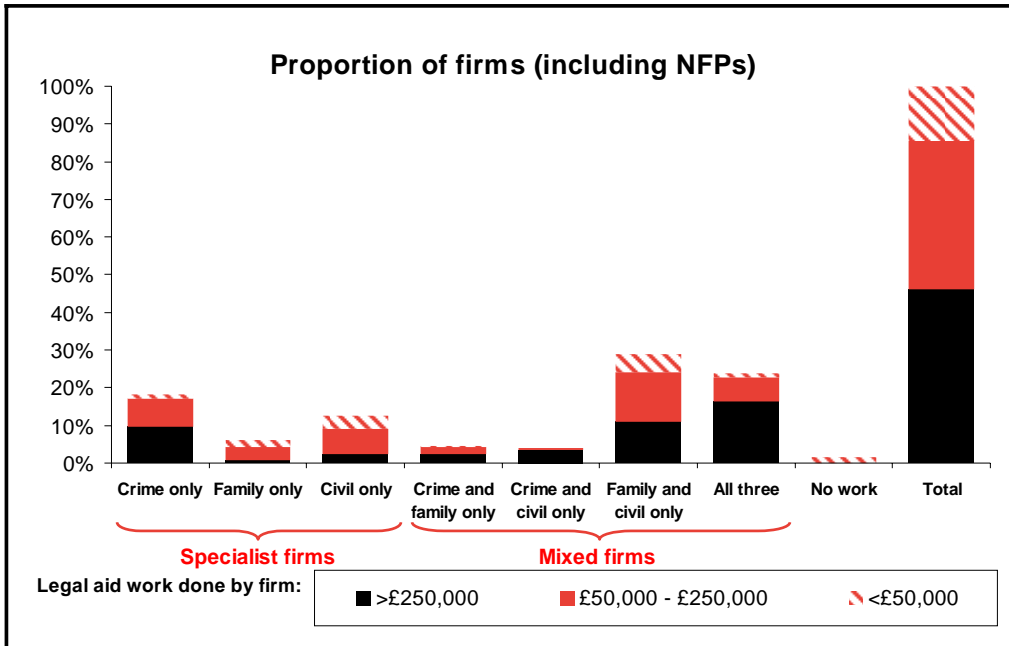


Figure 85: Number of specialist and mixed firms – South Eastern

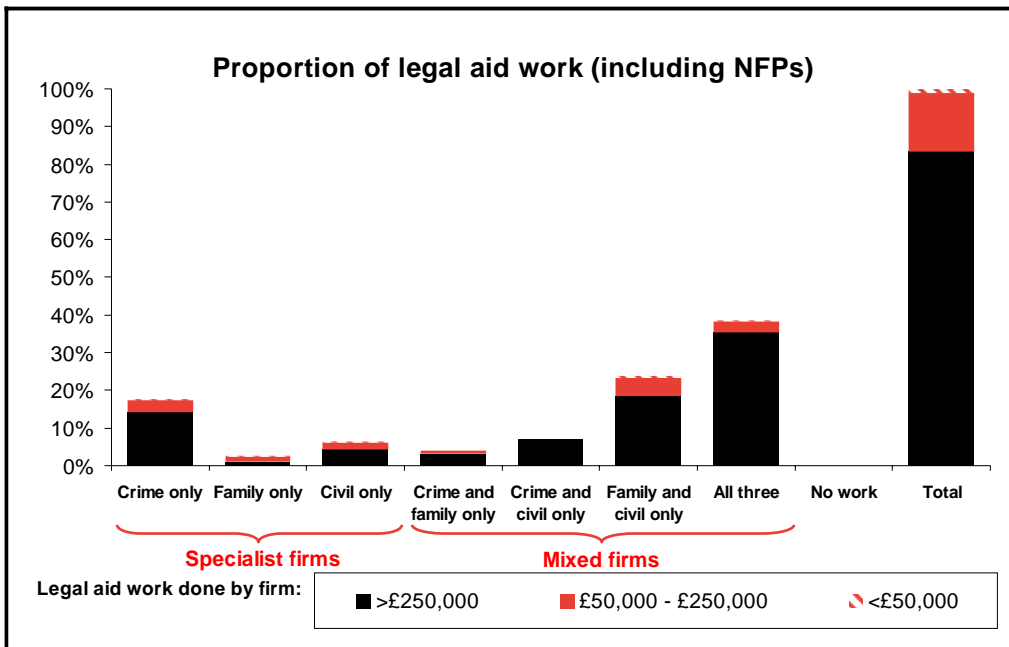


Figure 86: Value of work done by specialist and mixed firms – South Eastern

South West

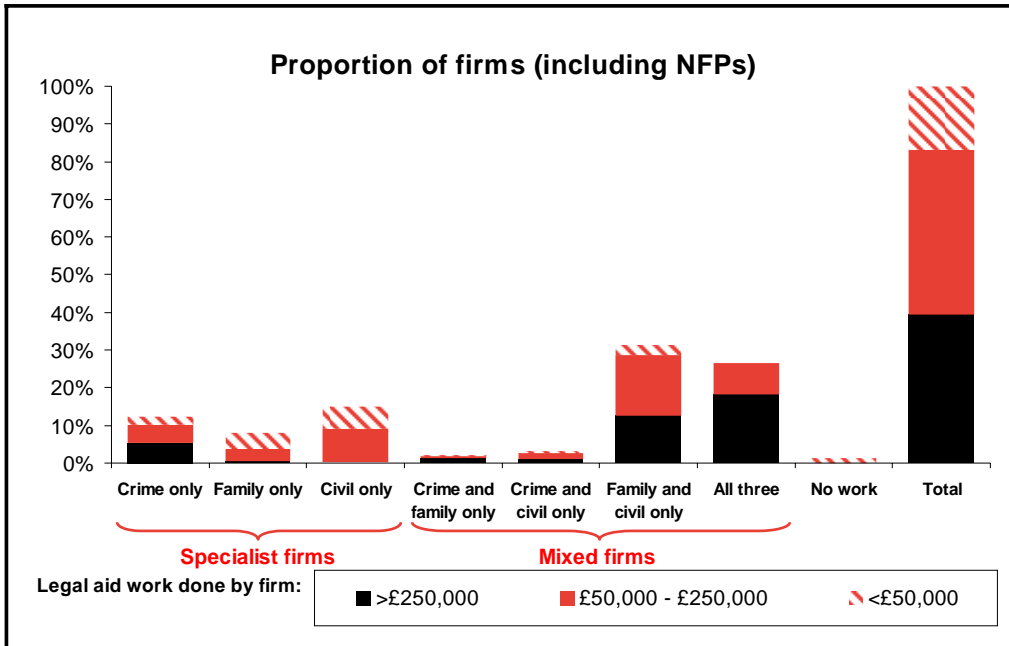


Figure 87: Number of specialist and mixed firms – South West

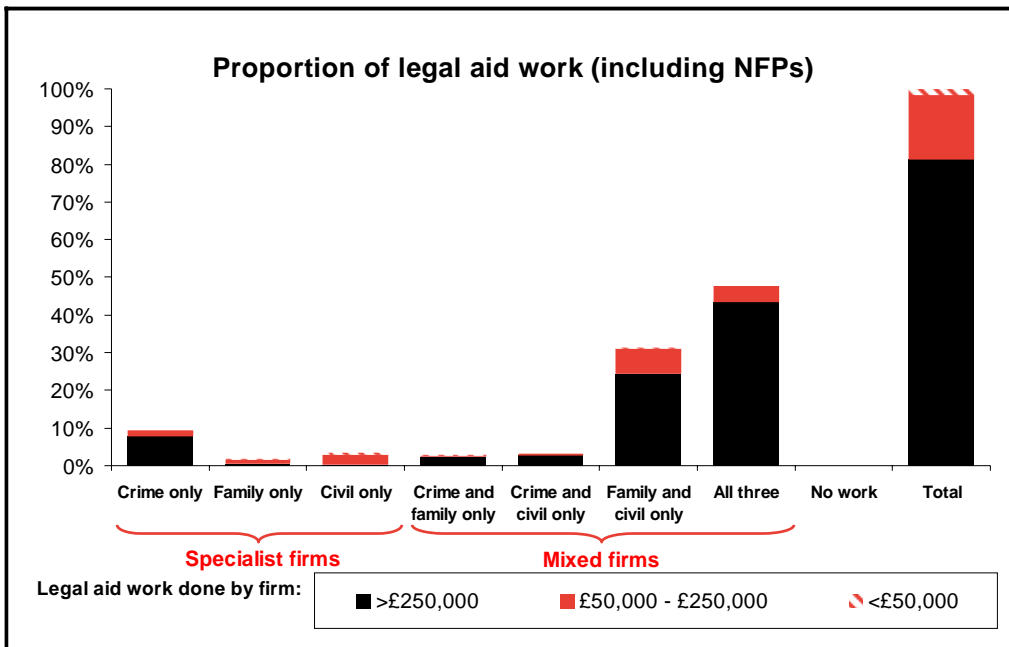


Figure 88: Value of work done by specialist and mixed firms – South West

Southern

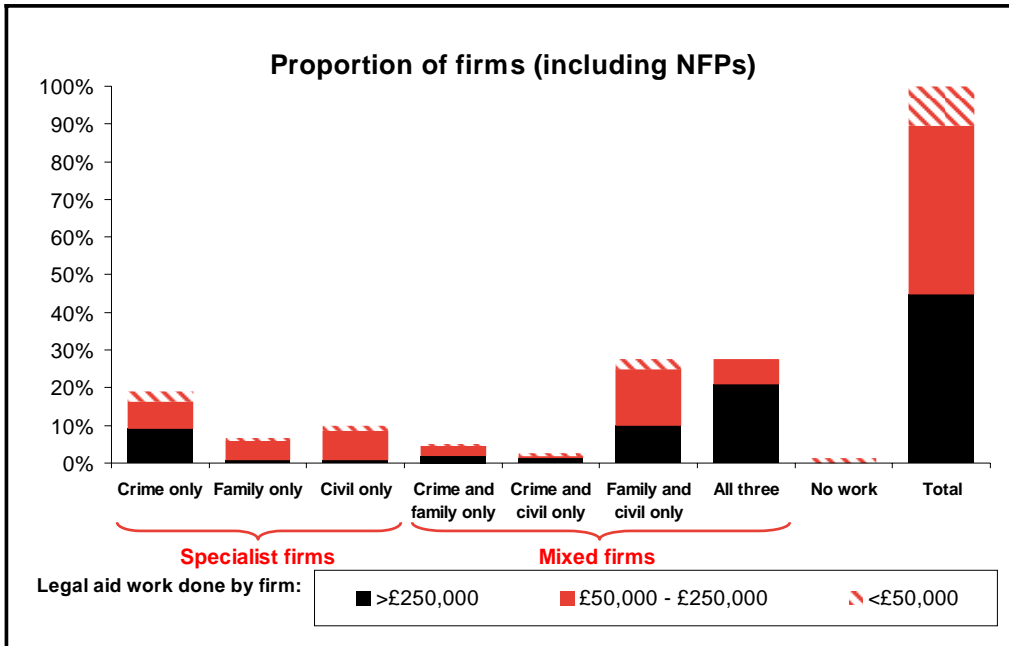


Figure 89: Number of specialist and mixed firms – Southern

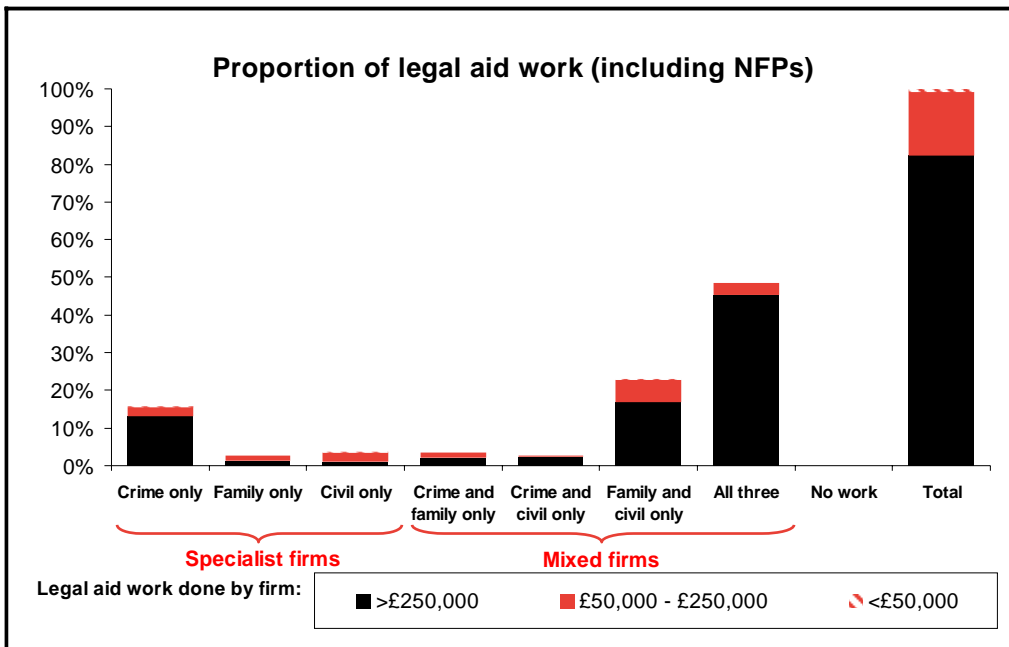


Figure 90: Value of work done by specialist and mixed firms – Southern

Wales

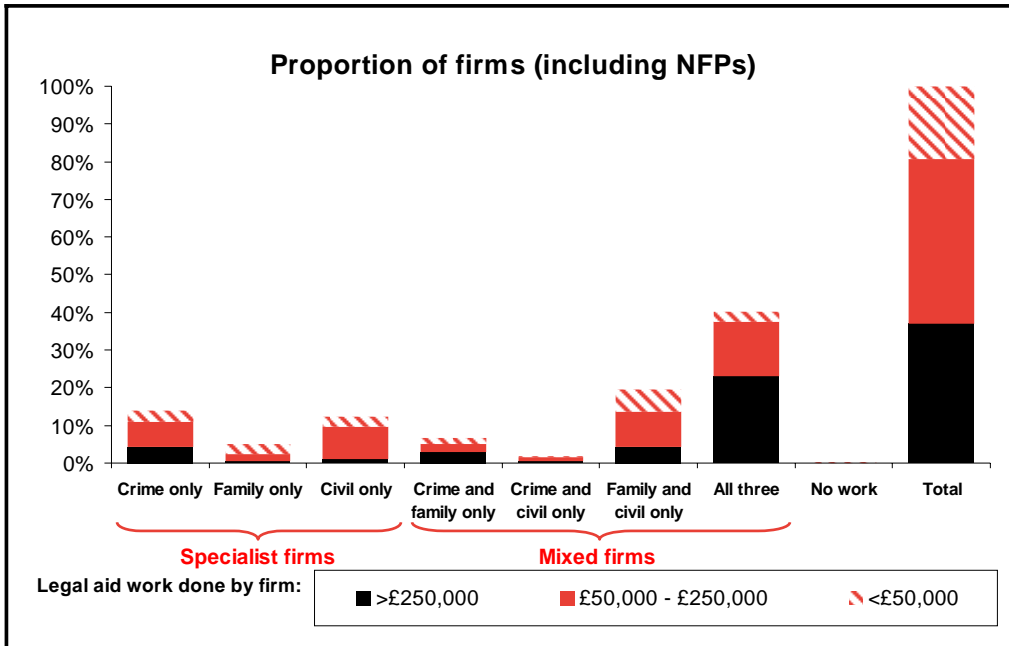


Figure 91: Number of specialist and mixed firms – Wales

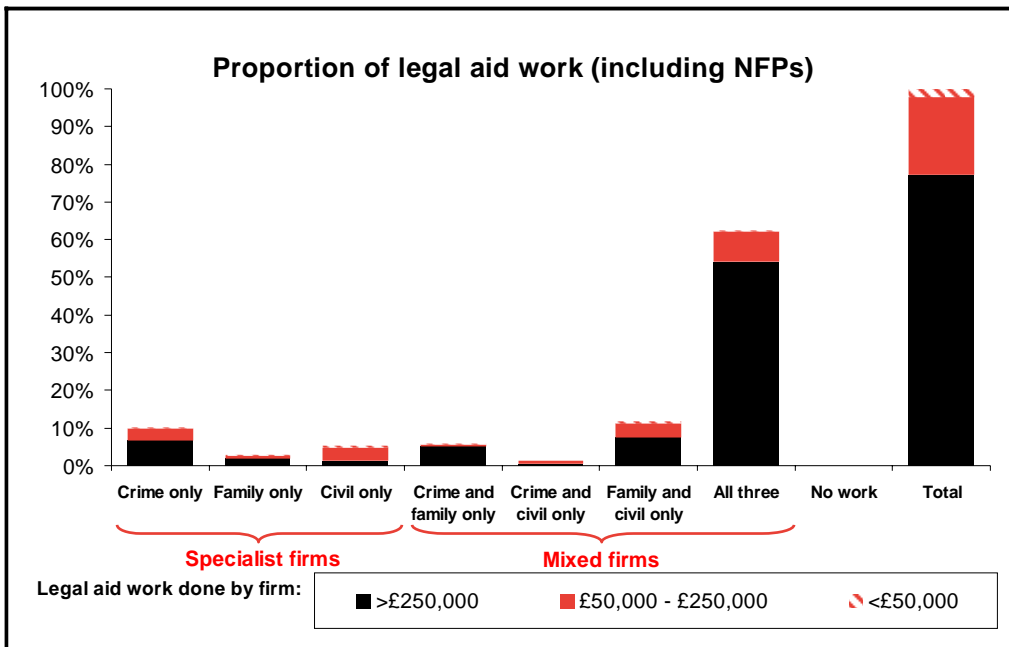


Figure 92: Value of work done by specialist and mixed firms – Wales

West Midlands

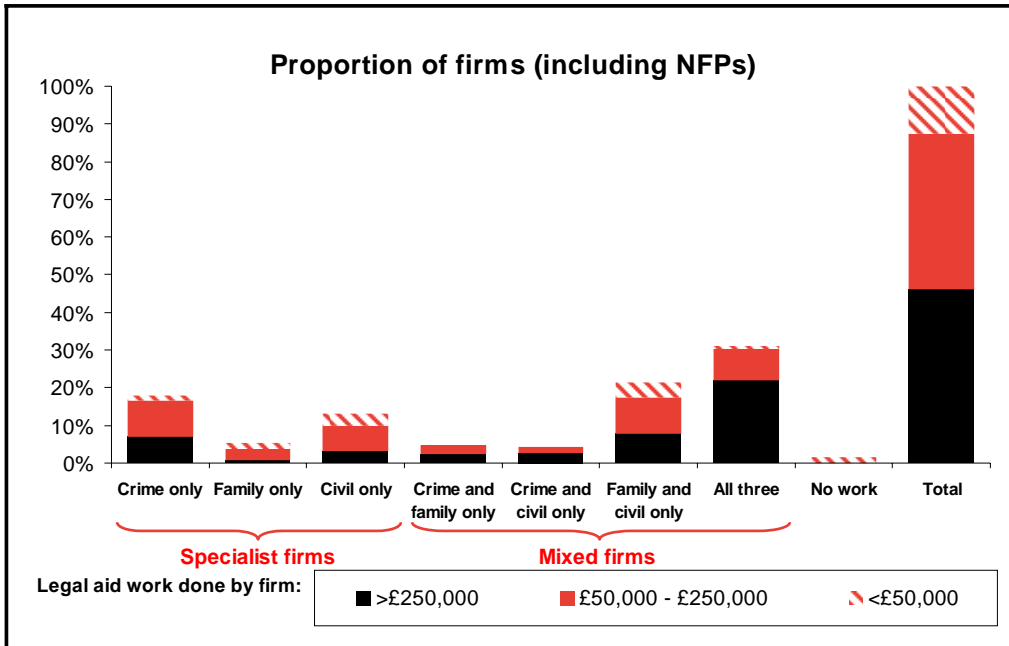


Figure 93: Number of specialist and mixed firms – West Midlands

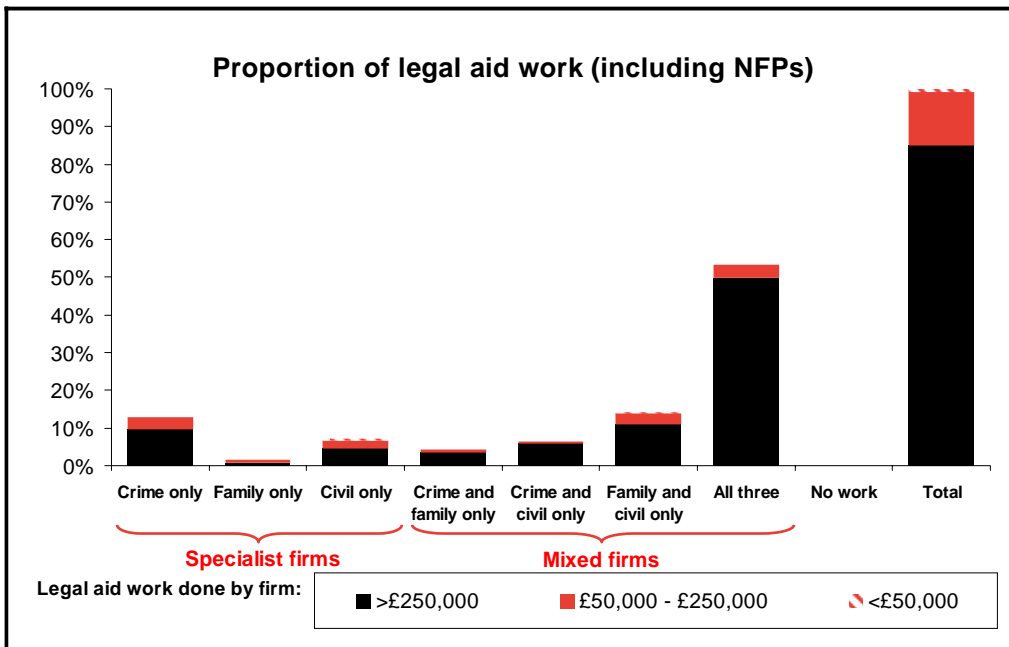


Figure 94: Value of work done by specialist and mixed firms – West Midlands

Yorkshire & Humberside

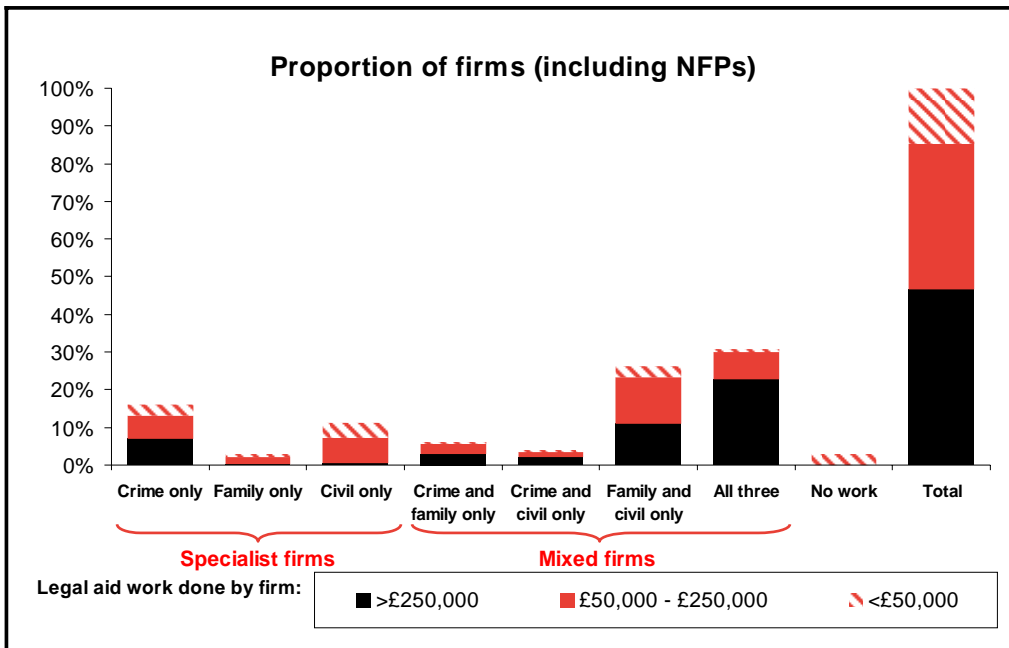


Figure 95: Number of specialist and mixed firms – Yorkshire & Humberside

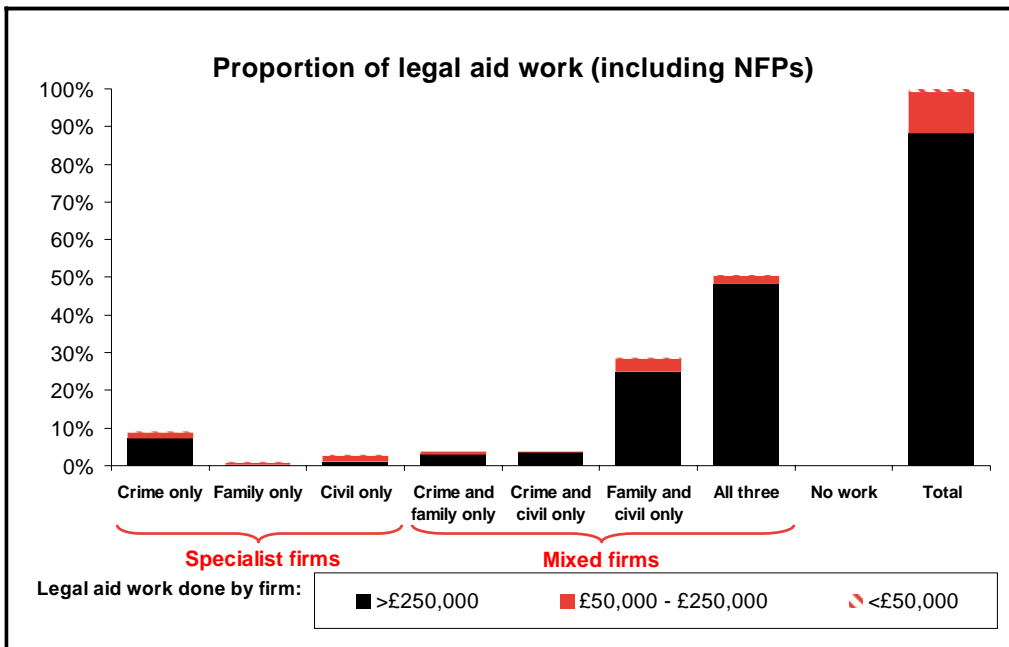


Figure 96: Value of work done by specialist and mixed firms – Yorkshire & Humberside